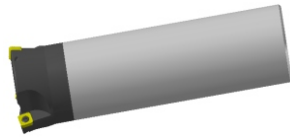




### XMR01

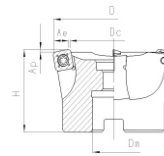
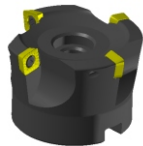
**NEW**





Type / Typ		Dimension(mm) Abmessungen									Applicable inserts Wendeschneidplatten	Screw Schraube	Wrench Schlüssel	
		D	Dc	Ap	Ae	L1	L	Dm	Z					
<b>XMR01-025-G25-SD09-02</b>	●	25	10.9	1.2	8	35	180	25	2	SDMT09T312-DM				
<b>XMR01-032-G32-SD09-03</b>	●	32	17.9	1.2	8	45	210	32	3					
<b>XMR01-032-G32-SD12-02</b>	●	32	17.9	2.0	11	50	210	32	2	SDMT120412-DM	I60M4x8.4 2.49€	WT15P 3.18€		
<b>XMR01-040-G40-SD12-03</b>	○	40	20.9	2.0	11	50	210	40	3					

### XMR01

**NEW**



Type / Typ		Dimension(mm) Abmessungen								Applicable inserts Wendeschneidplatten	Screw Schraube	Wrench Schlüssel	
		D	Dc	Ap	Ae	H	Dm	Z					
<b>XMR01-050-A22-SD09-04</b>	●	50	35	1.2	8	40	22	4	SDMT09T312-DM				
<b>XMR01-063-A22-SD09-05</b>	●	63	45	1.2	8	40	22	5					
<b>XMR01-063-A22-SD12-05</b>	●	63	40	2.0	11	40	22	5	SDMT120412-DM	I60M4x8.4 2.49€	WT15P 3.18€		
<b>XMR01-080-A27-SD12-05</b>	●	80	50	2.0	11	50	27	5					
<b>XMR01-100-B32-SD12-06</b>	○	100	50	2.0	11	50	32	6					

● ex stock / ab Lager / pris en magasin

○ short-term delivery / kurzfristige Lieferung / délai de livraison au plus court

+ on demand / auf Anfrage / sur demande