

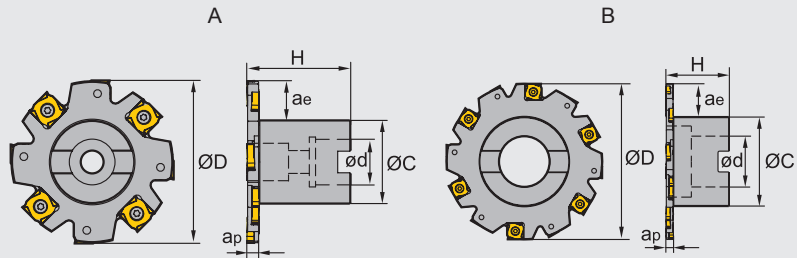
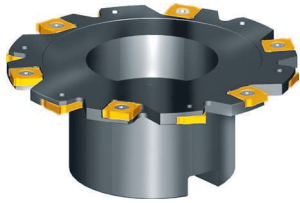
Milling · Fräsen

Indexable Milling Tools · Wendepplattenfräser

Side and face milling tools · Scheibenfräser



SMP01 P M K



Specification of tools · Werkzeug Beschreibung




Type · Typ	Stock Lager		Dimensions (mm) · Abmessungen							Inserts WSP	No. of teeth Zähne	Coupling Aufnahme	Weight Gewicht (kg)
	R	L	Ø D	ø d	ø c	H	ap	aemax					
SMP01 Arbor mounting	-063×4-A22-SN12-06	●	○	63	22	32	40	4	14	XSEQ1202	6	A	0.2
	-080×4-A22-SN12-08	●	○	80	22	40	40	4	18		8	A	0.4
	-100×4-A27-SN12-10	○	○	100	27	48	50	4	23		10	A	0.6
	-063×5-A22-SN12-06	○	○	63	22	32	40	5	14	XSEQ1203	6	A	0.2
	-080×5-A22-SN12-08	●	○	80	22	40	40	5	18		8	A	0.4
	-100×5-A27-SN12-10	○	○	100	27	48	50	5	23		10	A	0.7
	-063×6-A22-SN12-06	○	○	63	22	32	40	6	14	XSEQ12T3	6	A	0.2
	-080×6-A22-SN12-08	●	○	80	22	40	40	6	18		8	A	0.5
	-100×6-A27-SN12-10	●	○	100	27	48	50	6	23		10	A	0.7
	-125×6-B40-SN12-12	○	○	125	40	70	50	6	30	XSEQ1204	12	B	1.0
	-160×6-B40-SN12-16	○	○	160	40	70	60	6	41		16	B	1.3
	-063×7-A22-SN12-06	○	○	63	22	32	40	7	14		6	A	0.2
	-080×7-A22-SN12-08	○	○	80	22	40	40	7	18	XSEQ1204	8	A	0.5
	-100×7-A27-SN12-10	●	○	100	27	48	50	7	23		10	A	0.7
	-125×7-B40-SN12-12	○	○	125	40	70	50	7	30		12	B	1.1
	-160×7-B40-SN12-16	○	○	160	40	70	60	7	41	XSEQ12T4	16	B	1.4
-063×8-A22-SN12-06	○	○	63	22	32	40	8	14	6		A	0.2	
-080×8-A22-SN12-08	○	○	80	22	40	40	8	18	8		A	0.5	
-100×8-A27-SN12-10	○	○	100	27	48	50	8	23	XSEQ12T4	10	A	0.8	
-125×8-B40-SN12-12	○	○	125	40	70	50	8	30		12	B	1.1	
-160×8-B40-SN12-16	○	○	160	40	70	60	8	41		16	B	1.5	

● Ex Stock / ab Lager ○ On demand / auf Anfrage

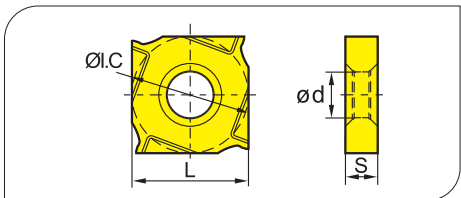
Milling · Fräsen

Indexable Milling Tools · Wendepplattenfräser

Spare parts · Ersatzteile


Diameter Durchmesser Ø D	Cutting width a _p	Screw Schraube	Wrench Schlüssel	
				
Ø63-Ø160	4	I91M4×3.2X	WT10S	
Ø63-Ø160	5	I91M4×4.2X		
Ø63-Ø250	6	I91M4×5.1X		
Ø63-Ø250	7	I91M4×6.1X		
Ø63-Ø250	8	I91M4×7.1X		

Applicable inserts · Wendeschneidplatten



● Ideal Machining Condition / Gute Bearbeitungsbedingungen
● Normal Machining Condition / Normale Bearbeitungsbedingungen
● Unfavorable Machining Condition / Ungünstige Bearbeitungsbedingungen

Workpiece Material / Werkstoffe	P	M	K	N	S	YBC301	YBC401	YBM251	YBM253	YBM351	YBD152	YBD252	YBG102	YBG202	YBG205	YBG302	YBG152	YBG252	YNG151	YNG151C	YC305	YD051	YD101	YD201
P Steel / Stahl	●	●	●	●	●	●	●	●	●	●	●	●	●	●	●	●	●	●	●	●	●	●	●	●
M Stainless Steel / Rostfreier Stahl	●	●	●	●	●	●	●	●	●	●	●	●	●	●	●	●	●	●	●	●	●	●	●	●
K Cast iron / Gusseisen	●	●	●	●	●	●	●	●	●	●	●	●	●	●	●	●	●	●	●	●	●	●	●	●
N Non-ferrite material / Ne Metalle	●	●	●	●	●	●	●	●	●	●	●	●	●	●	●	●	●	●	●	●	●	●	●	●
S Heat-resistant steel / Warmfester Stahl	●	●	●	●	●	●	●	●	●	●	●	●	●	●	●	●	●	●	●	●	●	●	●	●

Insert WSP	Type · Typ	Dimensions (mm) · Abmessungen				CVD Coating CVD Beschicht.				PVD Coating PVD Beschicht.				Cermet		Carbide uncoat. unbe. Hartmetall								
		I.C	L	S	d	YBC301	YBC401	YBM251	YBM253	YBM351	YBD152	YBD252	YBG102	YBG202	YBG205	YBG302	YBG152	YBG252	YNG151	YNG151C	YC305	YD051	YD101	YD201
	XSEQ1202	12.7	12.7	2.3	5.0											●								
	XSEQ1203	12.7	12.7	3.0	5.0				○							●								
	XSEQ12T3	12.7	12.7	3.5	5.0	○										●								
	XSEQ1204	12.7	12.7	4.0	5.0											●								
	XSEQ12T4	12.7	12.7	4.5	5.0											●								

Recommended Cutting data · Schnittdaten

	Workpiece material Werkstück- stoff	Hardness HB Härte	Grade Sorte	Cutting data · Schnittdaten	
				V(m/min)	f(mm/z)
P	Low-carbon steel Soft steel Niedrig legierter Kohlenstoffstahl Baustahl	≤180	YBG202	180 (100-250)	0.1(0.08-0.25)
			YBG302	150 (100-200)	0.15(0.1-0.3)
	High-carbon steel Alloy steel Hoch Leg. Kohlenstoffstahl Leg. Stahl	180-280	YBG202	150 (80-250)	0.1(0.08-0.25)
			YBG302	120 (80-200)	0.15(0.1-0.3)
M	Alloy tool steel Leg. Werkzeugstahl	280-350	YBG202	120 (80-250)	0.1(0.08-0.25)
			YBG302	100 (80-200)	0.15(0.1-0.3)
K	Stainless steel Rostfreier Stahl	≤270	YBG202	120 (80-250)	0.1(0.05-0.15)
			YBG302	100 (80-200)	0.08(0.05-0.15)
K	Cast iron Gusseisen	180-250	YBG152	120 (80-250)	0.1(0.05-0.15)
			YBG302	150 (100-250)	0.08(0.05-0.15)

Applicable tool **B9-B15**
Werkzeug

Tools code key **B22-B23**
Werkzeug ISO

Grade selection guide **B16-B20**
Sortenauswahl

Technical data **B183-B188**
Technische Daten