

Milling · Fräsen

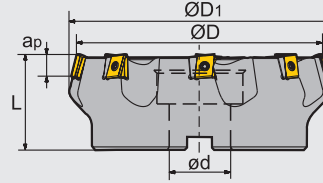
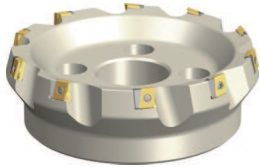
Indexable Milling Tools · Wendeplattenfräser

Face Milling Tools · Planfräser

Kr:75°



FME04 P M K

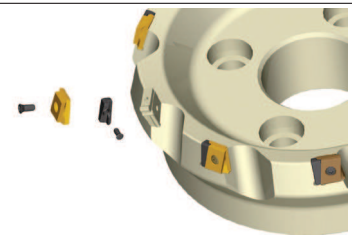


Specification of tools · Werkzeug Beschreibung

Type · Typ	Stock Lager	Dimension (mm) Abmessung							No. of teeth Zähne	Coupling Aufnahme	Weight Gewicht (kg)
		R	L	Ø D	Ø D ₁	Ø D	L	ap _{max}			
FME04	-125-B40-LN15-06	●	○	125	137	40	63	8	6	B	3.8
	-160-B40-LN15-08	●	○	160	170	40	63	8	8	C	6.6
	-200-C60-LN15-10	●	○	200	208	60	70	8	10	C	9.6
	-250-C60-LN15-12	●	○	250	257	60	70	8	12	C	13.4
	-315-D60-LN15-16	○	○	315	328	60	80	8	16	D	25.2

Spare Parts · Ersatzteile

Diameter Durchmesser Ø D	Shim Unterlage	Wedge Keil	Screw Schraube	Wrench Schlüssel
Ø80 Ø100				
Ø125 ~ Ø315	LLN15-ZR	I60M3×7	I60M4×15	WT15IS WT10IS



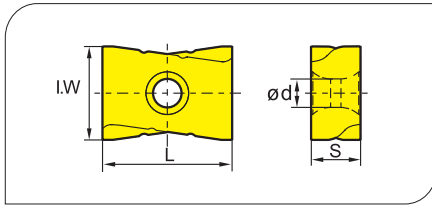
● Ex Stock / ab Lager ○ On demand / auf Anfrage

Milling · Fräsen

Indexable Milling Tools · Wendepplattenfräser

- Ideal Machining Condition / Gute Bearbeitungsbedingungen
- Normal Machining Condition / Normale Bearbeitungsbedingungen
- Unfavorable Machining Condition / Ungünstige Bearbeitungsbedingungen

Applicable inserts · Wendeschneidplatten



Workpiece Material / Werkstoffe	Steel / Stahl	Stainless Steel / Rostfreier Stahl	Cast iron / Gusseisen	Non-ferrous material / Ne Metalle	Heat-resistant steel / Warmfester Stahl
P	●●●●●●●●●●	●●●●●●●●●●	●●●●●●●●●●	●●●●●●●●●●	●●●●●●●●●●
M	●●●●●●●●●●	●●●●●●●●●●	●●●●●●●●●●	●●●●●●●●●●	●●●●●●●●●●
K	●●●●●●●●●●	●●●●●●●●●●	●●●●●●●●●●	●●●●●●●●●●	●●●●●●●●●●
N	●●●●●●●●●●	●●●●●●●●●●	●●●●●●●●●●	●●●●●●●●●●	●●●●●●●●●●
S	●●●●●●●●●●	●●●●●●●●●●	●●●●●●●●●●	●●●●●●●●●●	●●●●●●●●●●

Insert shape / Plattenform	Type · Typ	Dimension (mm) / Abmessung				CVD Coating / CVD Beschicht.				PVD Coating / PVD Beschicht.				Cermet	Carbide uncoat. / unbe. Hartmetall										
		L	I.W	S	d	YBC301	YBC401	YBM251	YBM253	YBM351	YBD152	YBD252	YBG102			YBG202	YBG205	YBG302	YBG152	YBG252	YNG151	YNG151C	YC305	YD051	YD101
	LNKT1506EN-ZR	15.875	14	6.35	4.6	●	●	●	●	●															

Recommended cutting data · Empfohlene Schnittdaten

Workpiece material	Hardness HB / Härte	Grade / Sorte	Cutting data · Schnittdaten	
			V (m/min)	f (mm/z)
P Low-carbon steel / Soft steel	≤180	YBG302	180 (150-300)	0.5 (0.2-0.8)
		YBM351	180 (150-300)	0.5 (0.2-0.8)
	180-280	YBG302	150 (120-280)	0.5 (0.2-0.8)
		YBM351	140 (120-280)	0.5 (0.2-0.8)
Alloy tool steel / Leg. Werkzeugstahl	280-350	YBG302	120 (80-250)	0.45 (0.2-0.6)
		YBM351	100 (80-250)	0.45 (0.2-0.6)
M Stainless steel / Rostfreier Stahl	≤270	YBG302	120 (80-200)	0.45 (0.2-0.6)
		YBM351	100 (80-200)	0.45 (0.2-0.6)
K Cast iron / Gusseisen	180-250	YBD152	150 (120-200)	0.3 (0.2-0.5)
		YBD252	130 (110-200)	0.3 (0.2-0.5)

Applicable tool / Werkzeug **B9-B15**

Tools code key / Werkzeug ISO **B22-B23**

Grade selection guide / Sortenauswahl **B16-B20**

Technical data / Technische Daten **B183-B188**