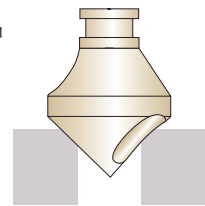
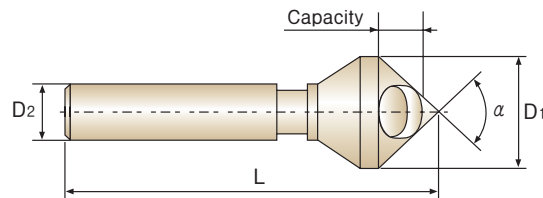
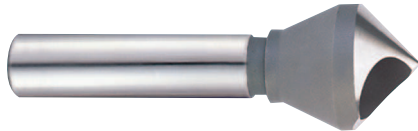


HSS, DEBURRING TOOL with HOLE

HSS, QUERLOCHSENKER

- ▶ For light metals and plastics.
- ▶ For deburring and small chamfers.
- ▶ Best surface finish.
- ▶ Works without vibrations.

- ▶ Für Leichtmetall und Plastik
- ▶ Zum Entgraten und Abfasen
- ▶ Bestes Oberflächenfinish
- ▶ Arbeitet ohne Vibration

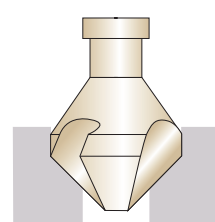
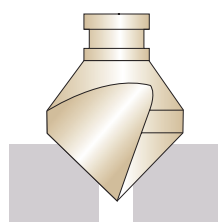
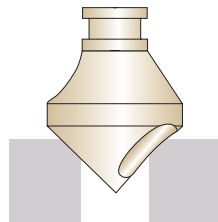


Unit : mm

EDP No. (uncoating)		Angle	Nominal Diameter	Shank Diameter	Overall Length	Capacity
HSSCo8	HSS	$\alpha (-1^\circ)$	D1	D2	L (± 1)	min/max
C1109100	C3109100	90°	10.0	6	45	2 - 5
C1109150	C3109150	90°	15.0	8	55	6 - 14
C1109200	C3109200	90°	20.0	10	65	8 - 18
C1109250	C3109250	90°	25.0	12	78	10 - 23
C1109300	C3109300	90°	30.0	12	88	12 - 28
C1109350	C3109350	90°	35.0	16	110	14 - 33
C1109400	C3109400	90°	40.0	16	115	16 - 38
C1109450	C3109450	90°	45.0	16	120	18 - 43
C1109500	C3109500	90°	50.0	16	130	20 - 48

▶ TiN & TiCN coating are available on your request.

Nominal Dia. Tolerance(mm)	Shank Dia. Tolerance(mm)
+0.3	h9



Material	V	S			V	S			V	S		
		Ø ≤ 10	Ø ≤ 20	Ø ≤ 30		Ø ≤ 10	Ø ≤ 20	Ø ≤ 30		Ø ≤ 10	Ø ≤ 20	Ø ≤ 30
STEELS ≤ 500N/mm ²	35-45	0.20	0.22	0.24	35-45	0.20	0.22	0.24	17-22	0.30	0.32	0.36
STEELS 500~800N/mm ²	20-30	0.14	0.17	0.20	20-30	0.14	0.17	0.20	10-15	0.28	0.30	0.31
STEELS 800~1000N/mm ²	15-20	0.11	0.12	0.14	15-20	0.11	0.12	0.14	8-12	0.24	0.26	0.28
STEELS-STAINLESS STEEL 1000~1300N/mm ²	12-15	0.10	0.12	0.15	12-15	0.10	0.12	0.15	6-8	0.20	0.20	0.22
STAINLESS STEELS	6-8	0.07	0.08	0.09	6-8	0.07	0.08	0.09	4-6	0.08	0.09	0.10
CAST IRON	20-40	0.15	0.24	0.28	20-40	0.15	0.24	0.28	15-25	0.13	0.19	0.24
ALUMINUM	50-60	0.22	0.25	0.27	50-60	0.22	0.25	0.27	35-45	0.27	0.30	0.35
BRASS-BRONZE	30-40	0.23	0.25	0.28	30-40	0.23	0.25	0.28	20-30	0.30	0.30	0.31
COPPER	20-30	0.22	0.25	0.27	20-30	0.22	0.25	0.27	10-15	0.29	0.30	0.31
PLASTICS	50-100	0.50	0.60	0.65	50-100	0.50	0.60	0.65	35-70	0.40	0.45	0.50

V : Cutting Speed(mm/min)

S : Feed per Revolution(mm/rev)