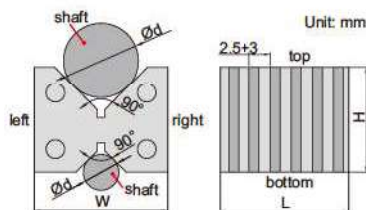
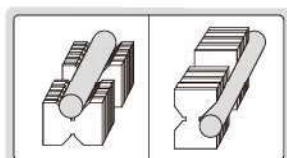


MAGNETIC INDUCTION V-BLOCK SET

- Hold cylindrical workpieces for inspection and machining
- To be used on magnetic chucks
- Two V-blocks per set
- V groove on the top for large shafts
- V groove on the bottom for small shafts

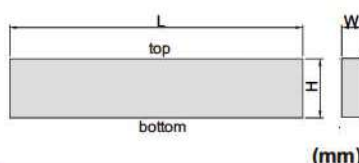


6899-1

Code	Size (LxWxH)	Range of shafts (Ød)	Pole pitch	Parallelism of both V grooves to top, bottom, left and right sides	Height difference of a matched pair
6899-1	55x60x48mm	6 - 50mm	2.5+3mm	10µm	10µm

PARALLEL SETS

- Parallelism between top and bottom: 5µm
- Height difference of a matched pair: 5µm
- Made of alloy tool steel
- Hardened to HRC55-60



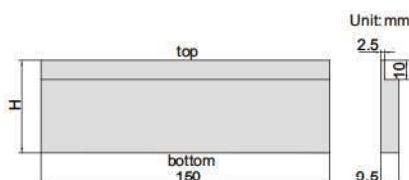
Code	Parallels per set	Length (L)	Thickness (W)	Height (H)
6533-10	10 pairs	150	3	13, 16, 19, 22, 25, 28, 31, 35, 38, 41
6533-144	14 pairs	150	10	14, 16, 18, 20, 22, 24, 26, 28, 30, 32, 35, 40, 45, 50
6533-6	6 pairs	200	9.5	35, 40, 45, 50, 55, 58



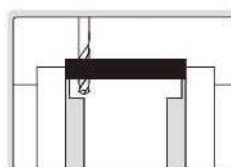
6533-144

PARALLEL SET

- Parallelism between top and bottom: 5µm
- Height difference of a matched pair: 5µm
- Made of alloy tool steel
- Hardened to HRC55-60

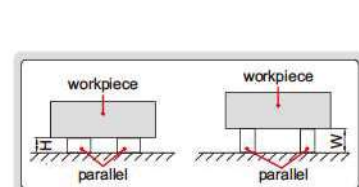


Code	Parallels per set	Height (H)
6534-6	6 pairs	25, 30, 35, 40, 45, 48

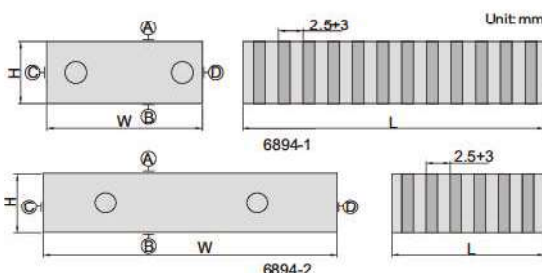


6534-6

MAGNETIC INDUCTION PARALLEL SETS



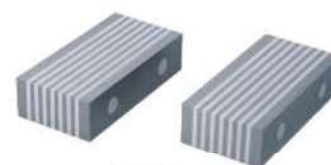
- To be used on magnetic chucks
- Two parallels per set



Code	Size (LxWxH)	Pole pitch	Parallelism between A and B	Parallelism between C and D	Height difference of a matched pair
6894-1	100x50x25mm	2.5+3mm	10µm	10µm	10µm
6894-2	50x100x25mm	2.5+3mm	10µm	10µm	10µm



6894-1



6894-2