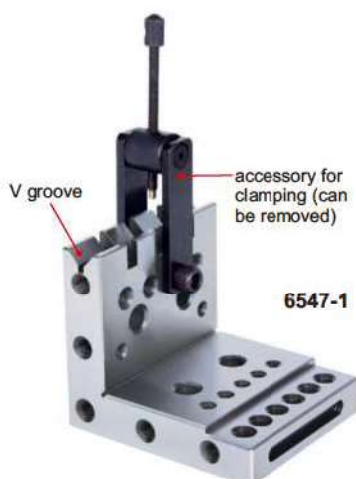


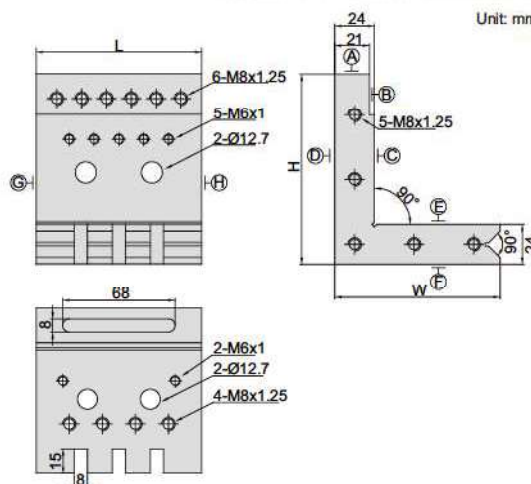
## RIGHT ANGLE PLATE

Unit: mm

- Made of alloy steel
- Hardened to HRC60±2
- V groove for cylinders
- Parallelism and squareness between A, B, C, D, E, F, G and H: 6µm
- Parallelism and squareness of V groove to A, B, C, D, E, F, G and H: 6µm



6547-1



Code	Size (LxWxH)
6547-1	100x100x115mm

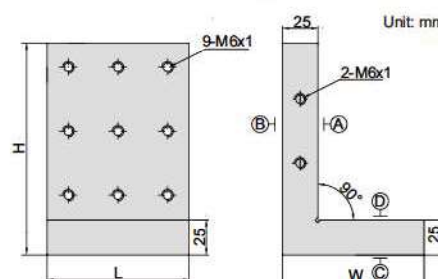
## RIGHT ANGLE PLATE

Unit: mm

- Made of tool steel
- Hardened to HRC60±2
- Squareness or parallelism between A, B, C and D: 5µm



6548-1



Code	Size (LxWxH)
6548-1	100x100x150mm

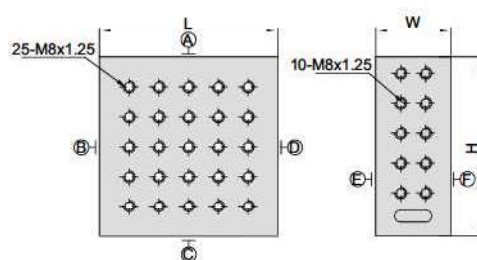
## RIGHT ANGLE PLATE

Unit: mm

- Made of tool steel
- Hardened to HRC56-58
- Parallelism between A, B, C, D, E and F: 3µm
- Squareness between A, B, C, D, E and F: 5µm

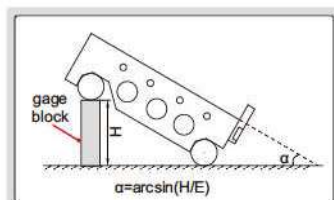


6549-1



Code	Size (LxWxH)
6549-1	150x63x150mm

- Made of alloy tool steel

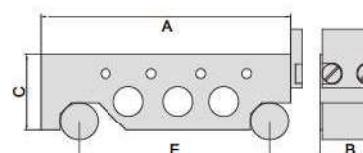


(mm)

Code	Roller distance (E)	Table size (AxB)	C	Accuracy of α at 30°
4155-100	100	130x30	40	±5 seconds
4155-200	200	230x30	40	±5 seconds
4155-300	300	345x40	50	±8 seconds



4155-100



## SINE BARS

HIGH PRECISION

The front and back ends and two sides have mounting holes to install plate

