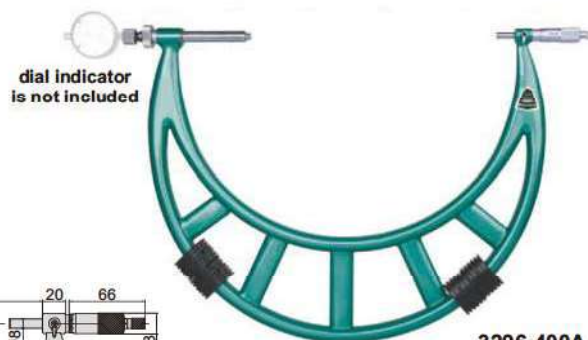


ATTENTION: NOT SUITABLE  
FOR 0.001mm INDICATORS

## MICROMETERS WITH DIAL INDICATOR

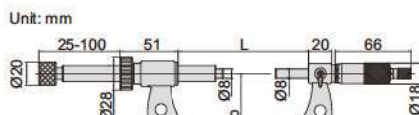


3296-100A

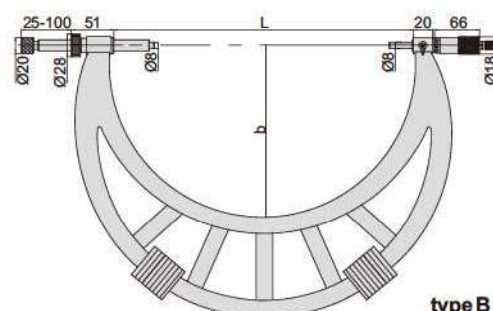


3296-400A

- Meet DIN863-3
- Graduation 0.01mm
- Ratchet stop
- Carbide measuring faces
- Supplied with setting standards
- Optional accessory:  
dial indicators (graduation 0.01mm)  
digital indicators (resolution 0.01mm/0.0005")



type A



type B

Code	Range	Type	Accuracy	L	b
3296-100A	0-100mm	A	6µm	115	68
3296-200A	100-200mm	A	7µm	215	120
3296-300A	200-300mm	A	8µm	315	170
3296-400A	300-400mm	B	9µm	415	225
3296-500A	400-500mm	B	10µm	515	275
3296-600A	500-600mm	B	11µm	615	325
3296-700A	600-700mm	B	12µm	715	375
3296-800A	700-800mm	B	13µm	815	430
3296-900A	800-900mm	B	14µm	915	480
3296-1000A	900-1000mm	B	15µm	1015	530

ATTENTION: SETTING  
STANDARDS ARE NOT INCLUDED



## MICROMETERS WITH DIAL INDICATOR

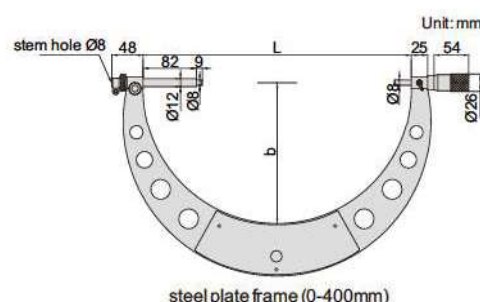
- Meet DIN863-3
- Micrometer head graduation: 0.01mm
- Adjust collars for different measuring ranges
- Anvil retracting range: 3mm
- Carbide measuring faces
- Optional accessory: dial indicators or digital indicators, setting standards

(mm)

Code	Range	Micrometer head range	Frame type	L	b
3633-100	0-100mm	25mm	steel plate	116	65
3633-200	100-200mm	25mm	steel plate	217	109
3633-300	200-300mm	25mm	steel plate	317	159
3633-400	300-400mm	25mm	steel plate	417	209
3633-500	400-500mm	25mm	steel tube	517	259
3633-600	500-600mm	25mm	steel tube	617	310
3633-700	600-700mm	25mm	steel tube	717	360
3633-800	700-800mm	25mm	steel tube	817	408
3633-900	800-900mm	25mm	steel tube	917	460
3633-1000	900-1000mm	25mm	steel tube	1017	512

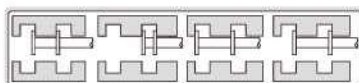


3633-300



steel plate frame (0-400mm)

- Graduation 0.01mm
- Measure width of grooves inside bores
- Non-rotating spindle
- Two graduations for inside and outside measurement



3287-25A

Code	Range (outside)	Range (inside)	Accuracy
3287-25A	0-25mm	1.6-26.5mm	10µm
3287-50A	25-50mm	26.5-51.5mm	10µm
3287-75A	50-75mm	51.5-76.5mm	10µm
3287-100A	75-100mm	76.5-101.5mm	10µm

