

PALLET ORIGINALI GERARDI ORIGINAL GERARDI PALLETS

Compatibili al 100%
To fit 100%

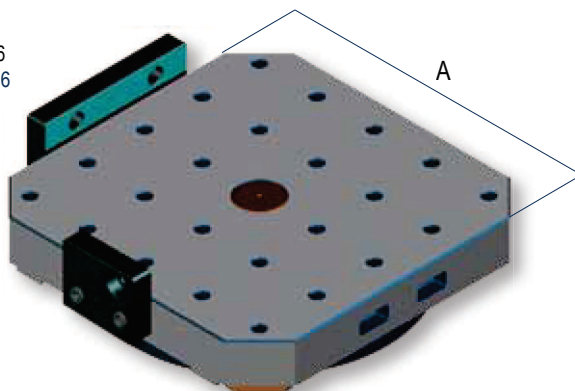
MAKINO, MAZAK, MORI SEIKI, OKUMA

Art. 85

Pallet a reticolo con fori in tegrali M16
Grid pallet type with solid threads M16

Ghisa monoblocco G30
stabilizzata
con doppio trattamento
di distensione.
Massima precisione

Solid cast iron cast G30
with double stress
relieving heat treatment.
Highest accuracy



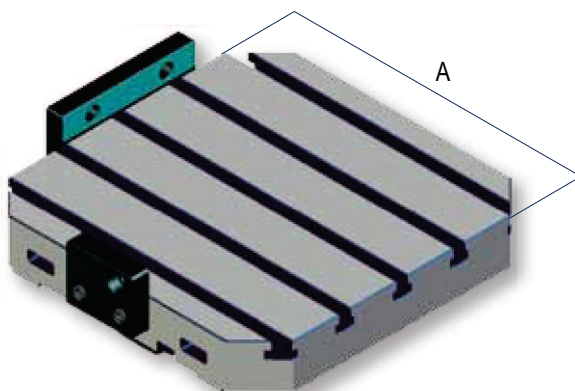
A	kg	Cod.	
400	85	8.85.404000	
500	165	8.85.505000	
630	270	8.85.636300	
800	300	8.85.808000	

Art. 86

Pallet con cave a T H7
Pallet with T H7 slot

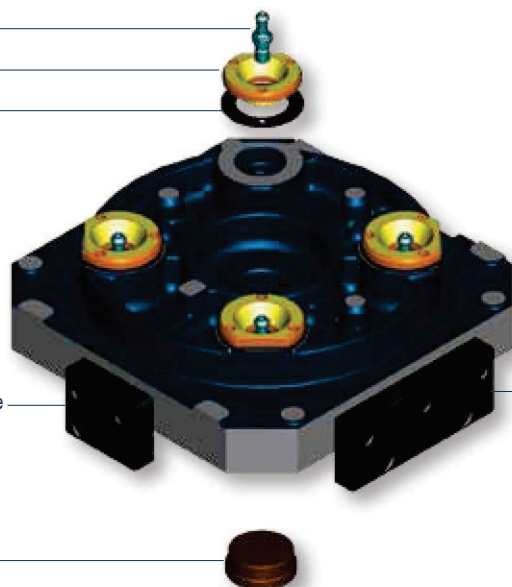
Ghisa monoblocco G30
stabilizzata
con doppio trattamento
di distensione.
Massima precisione

Solid cast iron cast G30
with double stress
relieving heat treatment.
Highest accuracy



A	kg	Cod.	
400	82	8.86.404000	
500	160	8.86.505000	
630	247	8.86.636300	
800	275	8.86.808000	

Art. 85B Tirante / Pull stud
Art. 85C Bussola / Bushing
Art. 85D Spessore / Spacer



Art. 85F Piastra piccola / Small plate

Art. 85M Tappo / Plug

Art. 85E Piastra grande / Big plate

■ **TUTTI GLI ACCESSORI
SONO FORNITI COMPLETAMENTE
TEMPRATI E RETTIFICATI**

■ **TUTTI I COMPONENTI
SONO COMPRESI NEL PREZZO**

■ **ALL ACCESSORIES ARE
SUPPLIED COMPLETELY
HARDENED AND GROUND HRC 60**

■ **PRICE ALL INCLUSIVE**



**SISTEMA DI PALLETTIZZAZIONE
UNIVERSALE A CAMBIO RAPIDO**

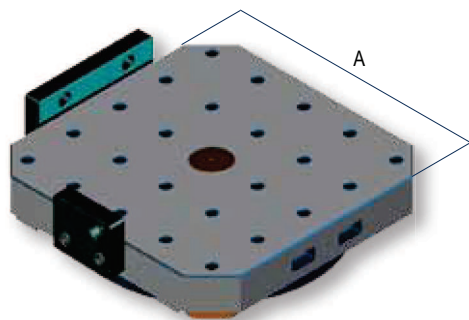
Zero Point applicati a pallet per centri di lavoro

**QUICK CHANGE UNIVERSAL
CLAMPING PALLET SYSTEM**

Zero Point assembled on machining centres pallet

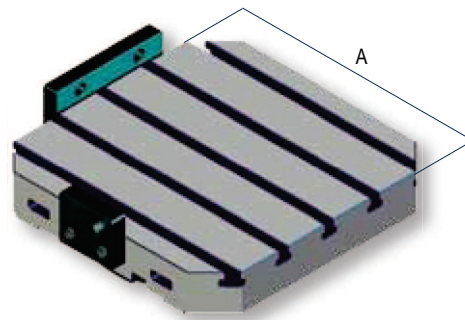
Art. 85

Pallet a reticolo con fori in tegrali M16
 Grid pallet type with solid threads M16



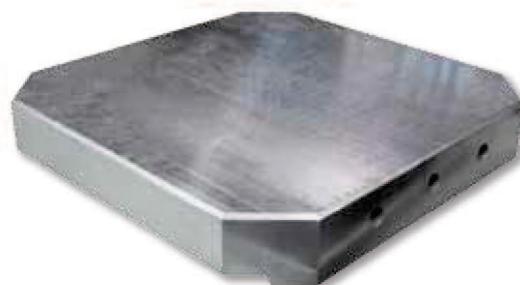
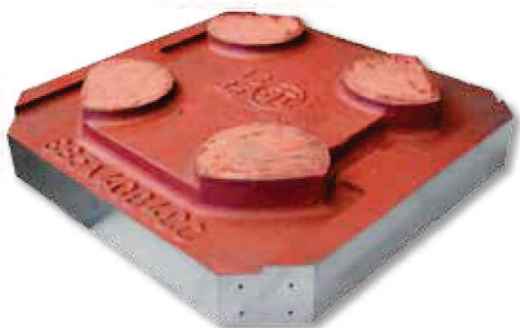
Art. 86

Pallet con cave a T H7
 Pallet with T H7 slot



■ Fase 1 / Step 1

Corpo Pallet semi lavorato - Semifinished machine pallet body



■ Fase 2 / Step 2

Corpo pallet finito completamente lavorato
 Machine pallet body finished completely machined



■ Fase 3 / Step 3

Pallet finito completo di tiranti, bussole e distanziali
 Finished pallet complete with pull studs, bushings and spacers

