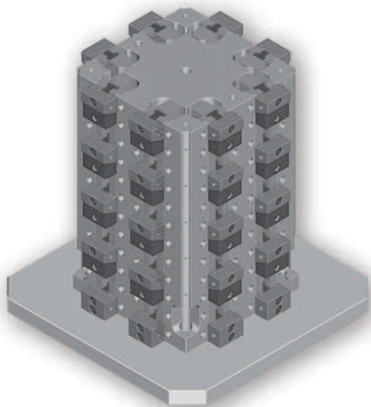


Dimensioni mm / Dimension mm

Art. 844

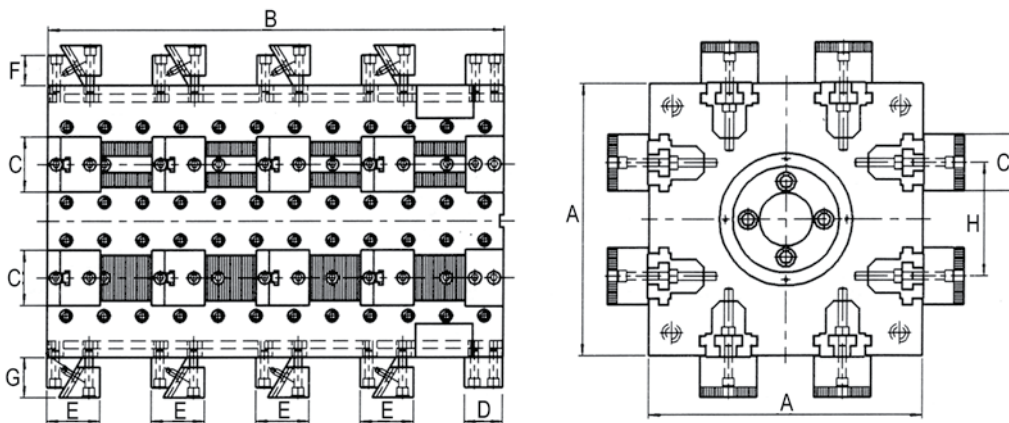
Cubo con morse Multiflex per il bloccaggio di 32 pezzi e oltre

Cube with Multiflex vises for clamping 32 pcs. and over



Art.	Pag.
840	8.22
604	6.28
605	6.29

A ±0.02	360
B	600
C ±0.02	75
D ±0.02	50
E ±0.02	70 / 75
F ±0.02	40
G ±0.02	40 / 33
H	150
Ghisa kg Cast iron	476
Cod.	5.84.43600



Ogni cubo è completo di 8 ganasce fisse e 32 ganasce fisse-movibili, 1 chiave a "T", tasselli di posizionamento e 32 arresti laterali.

Each cube is supplied with 8 fixed jaw and 32 fixed-movable jaw, 1 "T" wrench, one pair of key-nuts and 32 workstop.

Art. 844A

Una slitta completa (Art. 846 + Art. 604 + Art. 605A)
One complete slide (Art. 846 + Art. 604 + Art. 605A)

Cod. 5.84.4A360

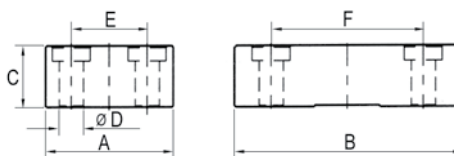
ACCESSORI

ACCESSORIES

Dimensioni mm / Dimension mm

Art. 845

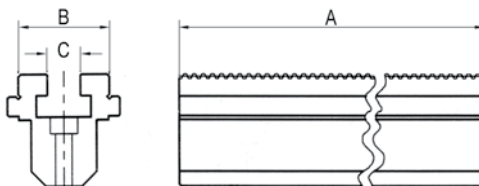
Ganascia fissa per cubo morse FMS (Art. 843)
Fixed jaw for FMS vise cube (Art. 843)



A ±0.02	84
B	148
C ±0.02	140
D F7	16
E	50
F	100
Cod.	5.84.53600

Art. 846

Guida integrale per cubo MULTIFLEX
Solid guide for MULTIFLEX cube



A ±0.02	600
B ±0.02	61
C ±0.02	22
Cod.	5.84.63600