

Tipo (grandezza) morsa / Vise (type) size

1

2

3

4

5

6

**Art. 823**

Piastra intermedia per Art. 855  
Middle plate for Art. 855



Cod.	5.82.31000	5.82.32000	5.82.33000	5.82.34000	5.82.35000	5.82.36000

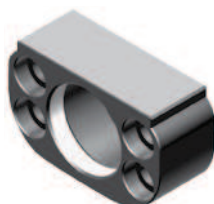
**Art. 823B**

Piastra intermedia per Art. 800  
Middle plate for Art. 800

Cod.	5.82.3B100	5.82.3B200	5.82.3B300	5.82.3B400	5.82.3B500	5.82.3B600

**Art. 825**

Piastra di contenimento vite  
per morsa FMS per Art. 855  
Screw holding plate for FMS vise for Art. 855



Cod.	5.82.51000	5.82.52000	5.82.53000	5.82.54000	5.82.55000	5.82.56000

**Art. 825B**

Piastra di contenimento vite  
per morsa FMS per Art. 800  
Screw holding plate for FMS vise for Art. 800

Cod.	5.82.5B100	5.82.5B200	5.82.5B300	5.82.5B400	5.82.5B500	5.82.5B600

**Art. 825C**

Piastra di contenimento vite  
per morsa FMS per Art. 855W  
Screw holding plate for FMS vise for Art. 855W

Cod.	5.82.5C100	5.82.5C200	5.82.5C300	5.82.5C400	5.82.5C500	5.82.5C600

**Art. 831**

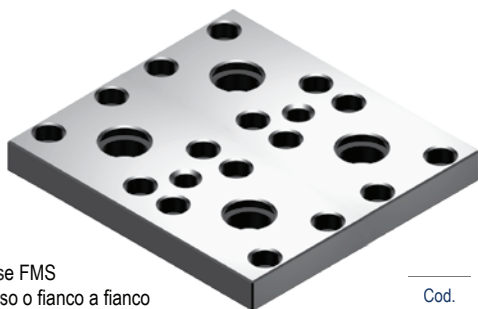
Piastra di collegamento per 2 morsa FMS  
montate verticalmente dorso a dorso o fianco a fianco  
Connecting plate for 2 FMS vises  
vertically mounted back-to-back or side by side



Cod.	5.83.11000	5.83.12000	5.83.13000	5.83.14000	5.83.15000	5.83.16000

**Art. 832**

Piastra di collegamento per 4 morsa FMS  
montate verticalmente dorso a dorso o fianco a fianco  
Connecting plate for 4 FMS vises  
vertically mounted back-to-back or side by side



Cod.	5.83.21000	5.83.22000	5.83.23000	5.83.24000	5.83.25000	5.83.26000

**Art. 833**

Piastra di collegamento personalizzata per 2 morsa FMS  
Connecting plate for 2 FMS vises tailor made

Cod.	5.83.31000	5.83.32000	5.83.33000	5.83.34000	5.83.35000	5.83.36000

**Art. 834**

Piastra di collegamento personalizzata per 4 morsa FMS  
Connecting plate for 4 FMS vises tailor made

Cod.	5.83.41000	5.83.42000	5.83.43000	5.83.44000	5.83.45000	5.83.46000