

3 MORSE IN UNA VISES IN ONE

Art. 810W

Ganascia mobile oscillante zigrinata da un lato, con albero a gradino (Art. 810Z)
 Floating movable jaw one side serrated with step block pin (Art. 810Z)

Art. 810Z

Albero a gradino per ganasce mobili oscillanti
 Step block pin for floating movable jaw

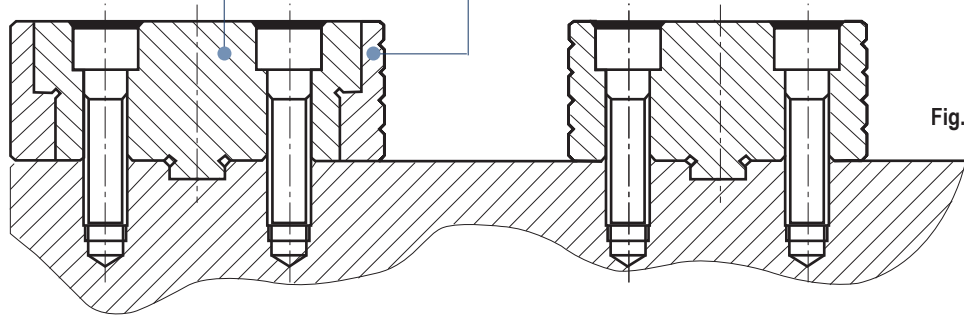


Fig. 1 Pic. 1

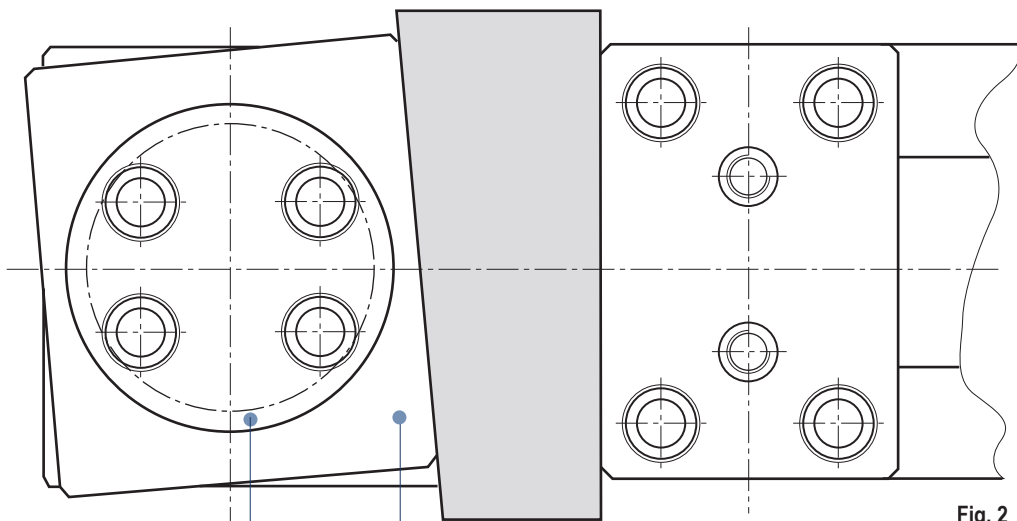


Fig. 2 Pic. 2

Albero a gradino per ganasce mobili oscillanti
 Step block pin for floating movable jaw

Art. 810Z

Ganascia mobile oscillante zigrinata da un lato, con albero a gradino (Art. 810Z)
 Floating movable jaw one side serrated with step block pin (Art. 810Z)

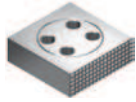
Art. 810W

Le ganasce mobili oscillanti consentono il serraggio di pezzi di forma irregolare i cui lati non risultino paralleli (Fig. 2). Questo è reso possibile dall'albero a gradino (Art. 810Z - Fig. 1), posto al centro della ganascia, che pur permettendo la rotazione della ganascia, ne mantiene la precisione ed evita il sollevamento del pezzo mentre viene lavorato. Il tutto a garanzia di un serraggio in piena sicurezza.

Floating movable jaws allow to clamp workpieces with irregular shapes whose sides are not parallels (Pic. 2). In fact thanks to the step block spindle (Art. 810Z - Pic. 1), positioned in the centre of the jaw body, the jaw can float and guarantee at the same time maximum precision and no tilting of the parts while being worked. The safety of the workholding is guaranteed.

Tipo (grandezza) morsa / Vise (type) size	1	2	3	4	5	6
---	---	---	---	---	---	---

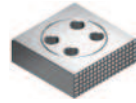
Art. 810W



Cod.	5.81.0W100	5.81.0W200	5.81.0W300	5.81.0W400	5.81.0W500	5.81.0W600

Ganascia mobile oscillante zigrinata da un lato con albero a gradino (Art. 810Z) / Floating movable jaw one side serrated with step block pin (Art. 810Z)

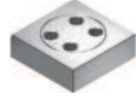
Art. 810X



Cod.	5.81.0X100	5.81.0X200	5.81.0X300	5.81.0X400	5.81.0X500	5.81.0X600

Ganascia mobile oscillante con gradino 3x5 zigrinata da un lato con albero a gradino (Art. 810Z) / Floating movable jaw with 3x5 step one side serrated with step block pin (Art. 810Z)

Art. 810Y



Cod.	5.81.0Y100	5.81.0Y200	5.81.0Y300	5.81.0Y400	5.81.0Y500	5.81.0Y600

Ganascia mobile oscillante con gradino 3x5 con albero a gradino (Art. 810Z) / Floating movable jaw with 3x5 step with step block pin (Art. 810Z)

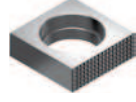
Art. 810Z



Cod.	5.81.0Z100	5.81.0Z200	5.81.0Z300	5.81.0Z400	5.81.0Z500	5.81.0Z600

Albero a gradino per ganasce mobili oscillanti / Step block pin for floating movable jaw

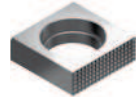
Art. 810WA



Cod.	5.81.0WA10	5.81.0WA20	5.81.0WA30	5.81.0WA40	5.81.0WA50	5.81.0WA60

Corpo ganascia mobile oscillante zigrinata da un lato / Body floating movable jaw one side serrated

Art. 810XA



Cod.	5.81.0XA10	5.81.0XA20	5.81.0XA30	5.81.0XA40	5.81.0XA50	5.81.0XA60

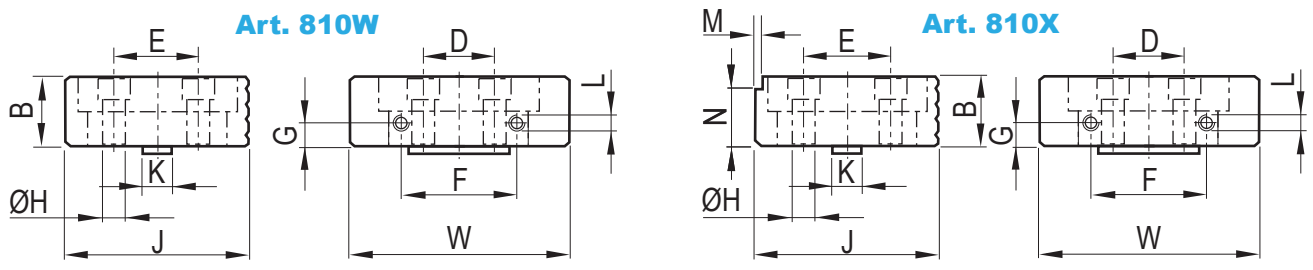
Corpo ganascia mobile oscillante con gradino 3x5 zigrinata da un lato / Body floating movable jaw with 3x5 step one side serrated

Art. 810YA



Cod.	5.81.0YA10	5.81.0YA20	5.81.0YA30	5.81.0YA40	5.81.0YA50	5.81.0YA60

Corpo ganascia mobile oscillante con gradino 3x5 / Body floating movable jaw with 3x5 step



Tipo (grandezza) morsa / Vise (type) size

mm	1	2	3	4	5	6	Tolleranze / Tolerance
B	25	30	40	50	60		- 0,02
D	20	25	38	48	44	54	-
E	32	40	50	60	68	68	-
F	40	50	65		100		-
G	10		15	20	25		-
H	9	11	13	17		22	-
L	M5		M6				-
K				16			H7
M				5			± 0,01
N				3			± 0,02
J	72	84	106	128	135	143	- 0,02
W	74	94	124	144	169	189	-