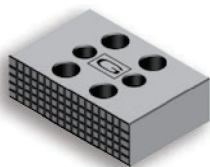


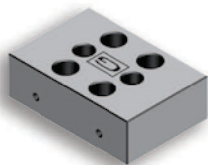
Tipo (grandezza) morsa / Vise (type) size

1
2
3
4
5
6
Art. 810

 Ganascia mobile zigrinata da un lato
 Movable jaw one side serrated


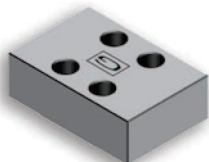
Cod.	5.81.01000	5.81.02000	5.81.03000	5.81.04000	5.81.05000	5.81.06000
------	------------	------------	------------	------------	------------	------------

Art. 810A

 Ganascia mobile liscia
 Smooth movable jaw


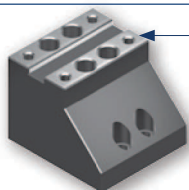
Cod.	5.81.0A100	5.81.0A200	5.81.0A300	5.81.0A400	5.81.0A500	5.81.0A600
------	------------	------------	------------	------------	------------	------------

Art. 810B

 Ganascia mobile dolce
 Soft movable jaw


Cod.	5.81.0B100	5.81.0B200	5.81.0B300	5.81.0B400	5.81.0B500	5.81.0B600
------	------------	------------	------------	------------	------------	------------

Art. 814

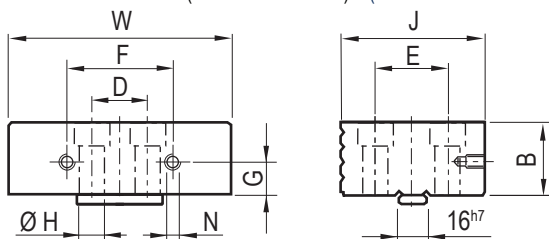
 Base mobile per ganasce
 Movable base for jaws


Predisposizione per tutte le ganasce FMS fisse / Fit all FMS fixed jaws

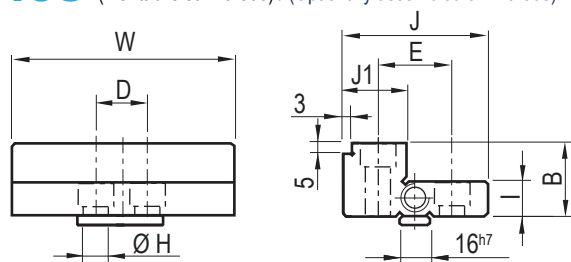
Cod.	5.81.41000	5.81.42000	5.81.43000	5.81.44000	5.81.45000	5.81.4.6000
------	------------	------------	------------	------------	------------	-------------

Art. 810

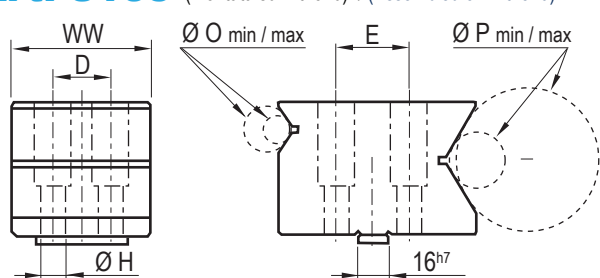
(Montata su Art. 860) / (Assembled on Art. 860)


Art. 8100

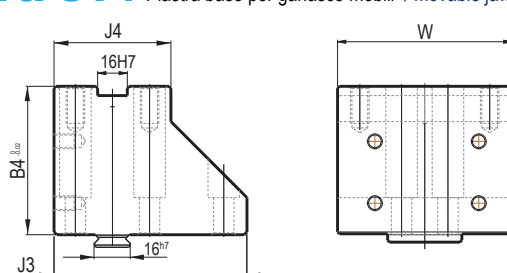
(Montabile su Art. 868) / (Optionally assembled on Art. 868)


Art. 810J

(Montata su Art. 870) / (Assembled on Art. 870)

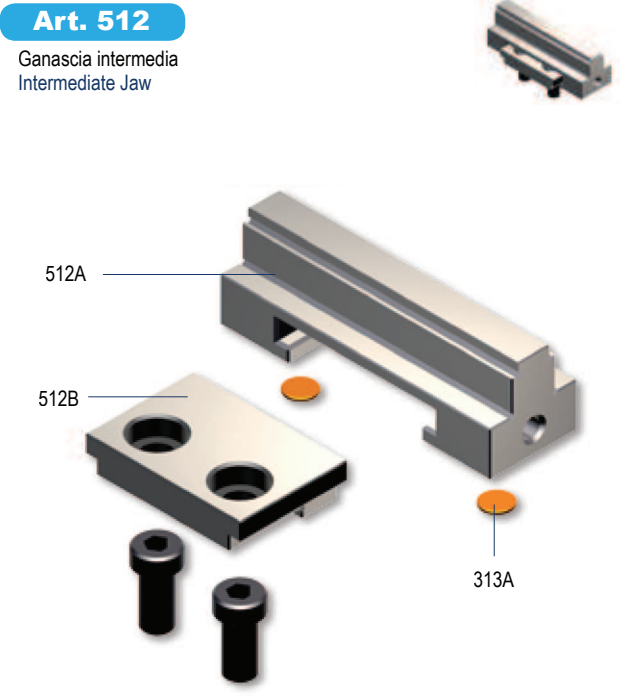
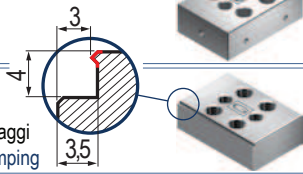

Art. 814

Piastra base per ganasce mobili / Movable jaws base

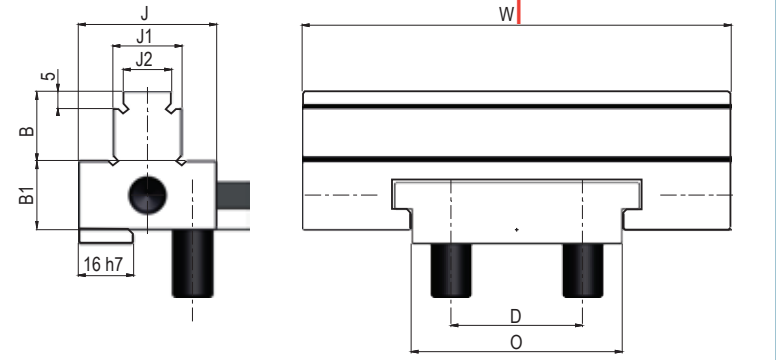


Tipo / Type	1 X 200	1 X 300	2	3	4	5	6	Tolleranze / Tolerance
W	74		94	124	144	169	189	-
WW	60		75	100	132	140	160	-
B	25		30	40	50	60	60	-0,02
B4	60		80	90	110	120	160	-0,02
D	20		25	38	44	44	54	-
E	26	32	40	50	60	68	68	-
F	40		50	65	65	65	100	-
G	10		10	15	20	25	25	-
H	9		11	13	17	17	22	-
I	12,5		15	20	25	30	30	-0,02
J	56		64	82	98	108	108	-0,02
J1	24		24	30	38	38	38	-0,02
J3	76	76	101	132	154	169	189	-
J4	55		63	83	96	106	106	-
N	M5		M6	M6	M6	M6	M6	-
Ø O	10 / 15		20 / 30	25 / 30	20 / 60	35 / 70	40 / 80	-
Ø P	10 / 25		20 / 50	40 / 100	45 / 150	63 / 200	73 / 100	-

Tipo (grandezza) morsa / Vise (type) size	1	2	3	4	5	6
Art. 810D Ganascia mobile con gradino 3x5 zigrinata da un lato Movable jaw with 3x5 step on side serrated	Cod. 5.81.0D100	5.81.0D200	5.81.0D300	5.81.0D400	5.81.0D500	5.81.0D600
Art. 810E Ganascia mobile con gradino 3x5 liscia Movable jaw with 3x5 step smooth	Cod. 5.81.0E100	5.81.0E200	5.81.0E300	5.81.0E400	5.81.0E500	5.81.0E600
Art. 810J Ganascia mobile prismatica per tondi liscia Prismatic movable jaw for round parts smooth	Cod. 5.81.0J100	5.81.0J200	5.81.0J300	5.81.0J400	5.81.0J500	5.81.0J600
Art. 810K Ganascia mobile prismatica per tondi zigrinata Prismatic movable jaw for round parts serrated	Cod. 5.81.0K100	5.81.0K200	5.81.0K300	5.81.0K400	5.81.0K500	5.81.0K600
Art. 810L Ganascia mobile con gradino Step movable jaw	Cod. 5.81.0L100	5.81.0L200	5.81.0L300	5.81.0L400	5.81.0L500	5.81.0L600
Art. 810M Ganascia mobile con gradino zigrinata da un lato Step movable jaw one side serrated	Cod. 5.81.0M100	5.81.0M200	5.81.0M300	5.81.0M400	5.81.0M500	5.81.0M600
Art. 810O Ganascia mobile con gradino piccolo e grande Movable jaw with small and large step	Cod. 5.81.0O100	5.81.0O200	5.81.0O300	5.81.0O400	5.81.0O500	5.81.0O600
Art. 810P Ganascia mobile con gradino piccolo e grande zigrin. da un lato Movable jaw with small and large step one side serrated	Cod. 5.81.0P100	5.81.0P200	5.81.0P300	5.81.0P400	5.81.0P500	5.81.0P600
Art. 810R Ganascia mobile in alluminio Movable jaw aluminium	Cod. 5.81.0R100	5.81.0R200	5.81.0R300	5.81.0R400	5.81.0R500	5.81.0R600
Art. 810T Ganascia mobile GRIP per forti serraggi GRIP movable jaw for strongest clamping	Cod. 5.81.0T100	5.81.0T200	5.81.0T300	5.81.0T400	5.81.0T500	5.81.0T600
Art. 810V Ganascia mobile con segmenti oscillanti Movable jaw with floating inserts	Cod. 5.81.0V100	5.81.0V200	5.81.0V300	5.81.0V400	5.81.0V500	5.81.0V600



Tipo - Type	1	2	3	4	5	6
Cod. 5.51.21000	5.51.22000	5.51.23000	5.51.24000	5.51.25000	5.51.26000	



Tipo - Type	1	2	3	4	5	6
W	74	94	124	144	169	189
J	25	35	40	40	50	50
J1	15	15	20	20	30	30
J2	9	9	14	14	19	19
B / B1	12,5	15	20	25	30	30
D	20	25	38	44	44	54
O	34	40	60	70	81	93

Vedi esempio applicativo - See application example: Pag. 5.13