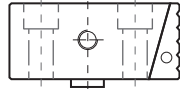
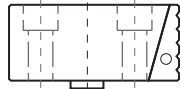


Tipo (grandezza) morsa / Vise (type) size

1
2
3
4
5
6
Art. 806


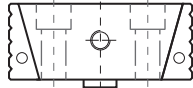
Cod.	5.80.61000	5.80.62000	5.80.63000	5.80.64000	5.80.65000	5.80.66000

Ganaschia fissa con piastra ganaschia intercambiabile rapida / Fixed jaw with quick interchangeable jaw plate

Art. 807


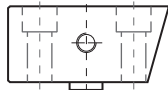
Cod.	5.80.71000	5.80.72000	5.80.73000	5.80.74000	5.80.75000	5.80.76000

Ganaschia mobile con piastra ganaschia intercambiabile rapida / Movable jaw with quick interchangeable jaw plate

Art. 808


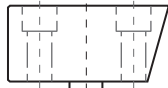
Cod.	5.80.81000	5.80.82000	5.80.83000	5.80.84000	5.80.85000	5.80.86000

Ganaschia fissa doppia con piastre ganasche intercambiabili rapide / Double fixed jaw with quick interchangeable jaw plate

Art. 806A


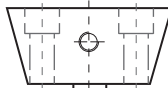
Cod.	5.80.6A100	5.80.6A200	5.80.6A300	5.80.6A400	5.80.6A500	5.80.6A600

Corpo ganaschia fissa per piastra ganaschia intercambiabile rapida / Fixed jaw body for quick interchangeable jaw plate

Art. 807A


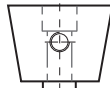
Cod.	5.80.7A100	5.80.7A200	5.80.7A300	5.80.7A400	5.80.7A500	5.80.7A600

Corpo ganaschia mobile per piastra ganaschia intercambiabile rapida / Movable jaw body for quick interchangeable jaw plate

Art. 808A


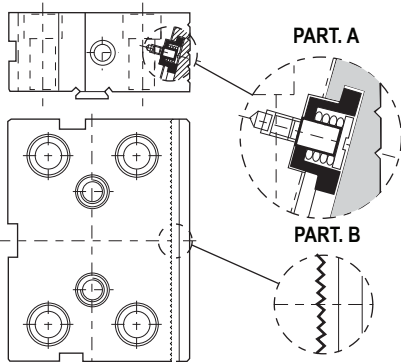
Cod.	5.80.8A100	5.80.8A200	5.80.8A300	5.80.8A400	5.80.8A500	5.80.8A600

Corpo ganaschia fissa doppia per piastre ganasche intercambiabili rapide / Double fixed jaw body for quick interchangeable jaw plate

Art. 808B


Cod.	5.80.8B100	5.80.8B200	5.80.8B300	5.80.8B400	5.80.8B500	5.80.8B600

Corpo ganaschia fissa doppia ridotta per piastre ganasche intercambiabili rapide / Double fixed jaw body narrow for quick interchangeable jaw plate


RAPIDA SOSTITUZIONE DELLE PIASTRE GANASCE DISCENDENTI SENZA BISOGNO DI ALCUN UTENSILE

Il nuovo sistema con piastre ganasche intercambiabili, conferisce alla morsa FMS un ulteriore aumento di flessibilità dato dalla rapidità di sostituzione delle piastre ganasche e dalla precisione di riposizionamento.

La rapidità di sostituzione delle piastre ganasche è resa possibile dal nuovo sistema con perno a molla (**PART. A**), mentre le righe prismatiche (**PART. B**) effettuate con mola sagomata sui piani d'appoggio rendono possibile un riposizionamento di elevata precisione.

La vasta gamma di piastre ganasche intercambiabili va a soddisfare le più svariate esigenze di lavorazione.

QUICK HAND CHANGE OF PULL-DOWN JAW PLATES - NO TOOLS NEEDED

The new system with quick interchangeable jaw plates, increase the FMS vise flexibility, and feature the quick jaw plates replacement and their high precision repositioning.

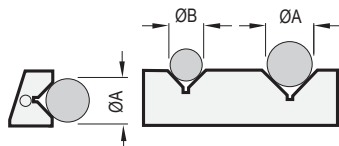
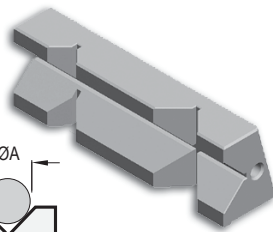
The quickness of the jaw plates replacement is allowed by the new system of pin with spring (**PART. A**), while the prismatic grooves (**PART. B**), made with shaped grind wheel on the surface plates, allow a perfect repositioning.

The wide range of interchangeable jaws plates can satisfy the most varied workholding needs.

PIASTRE RAPIDE - Dimensioni speciali / QUICK JAW PLATES - Special dimensions

 Piastra ganaschia rapida **SINGOLA SPECIALE**
TAYLOR MADE SINGLE quick change law plate

--	--	--	--	--	--	--

Art. 806F

 Piastra ganaschia intercambiabile prismatica a pettine
 Per serraggi autocentranti è necessario ordinare n. 2 piastrine prismatiche

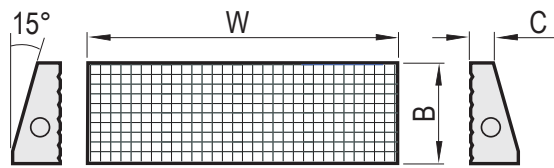
Prismatic comb interchangeable jaw plate

For self-centering clamping is necessary to order n. 2 prismatic jaws

Ø Min / Max	A	6 / 16	9 / 24	13 / 38	15 / 40	15 / 42	15 / 42
	B	4 / 10	7 / 18	9 / 24	9 / 24	9 / 24	9 / 24



Tipo (grandezza) morsa / Vise (type) size	1	2	3	4	5	6
PIASTRE RAPIDE - Ricambi per ganasce FMS a pettine QUICK JAW PLATES - Spares for comb FMS jaws						
W	73	93	123	143	168	188
B	25	30	40	50	60	60
C	10	10	11	11	16	16



Art. 806B

Piastra ganaschia intercambiabile dolce a pettine
Soft comb interchangeable jaw plate



Cod.	5.80.6B100	5.80.6B200	5.80.6B300	5.80.6B400	5.80.6B500	5.80.6B600

Art. 806C

Piastra ganaschia intercambiabile liscia a pettine
Smooth comb interchangeable jaw plate



Cod.	5.80.6C100	5.80.6C200	5.80.6C300	5.80.6C400	5.80.6C500	5.80.6C600

Art. 806D

Piastra ganaschia intercambiabile zigrinata a pettine
Serrated comb interchangeable jaw plate



Cod.	5.80.6D100	5.80.6D200	5.80.6D300	5.80.6D400	5.80.6D500	5.80.6D600

Art. 806E *

Piastra ganaschia intercambiabile a gradino a pettine
Step comb interchangeable jaw plate



Cod.	5.80.6E100	5.80.6E200	5.80.6E300	5.80.6E400	5.80.6E500	5.80.6E600

Art. 806F

Piastra ganaschia intercambiabile prismatica a pettine
Prismatic comb interchangeable jaw plate



2 per morsa !! 2 pcs each vise !!						
Cod.	5.80.6F100	5.80.6F200	5.80.6F300	5.80.6F400	5.80.6F500	5.80.6F600

Cad Each
Vedi dimensioni prisma pag. 5.16 / See prisma dimensions pag. 5.16

Art. 806G

Piastra ganaschia intercambiabile a pettine con arresto a 90°
90° interchangeable comb jaw plate



Solo 1 per morsa !! Just 1 pc each vise !!						
Cod.	5.80.6G100	5.80.6G200	5.80.6G300	5.80.6G400	5.80.6G500	5.80.6G600

Art. 806H

Piastra ganaschia intercambiabile bombata a pettine
Round comb interchangeable jaw plate



Cod.	5.80.6H100	5.80.6H200	5.80.6H300	5.80.6H400	5.80.6H500	5.80.6H600

Art. 806M

Piastra ganaschia intercambiabile a pettine per angolo di 30° o 45°
30° or 45° angle interchangeable comb jaw plate

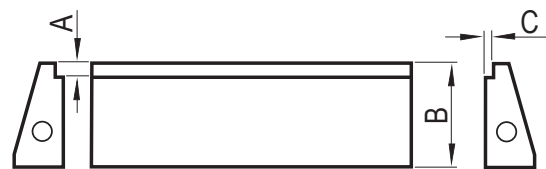


Solo 1 per morsa !! Just 1 pc each vise !!						
Cod.	5.80.6M100	5.80.6M200	5.80.6M300	5.80.6M400	5.80.6M500	5.80.6M600

*** KIT RISPARMIO SAVING KIT**

Art. 806E

Piastra ganaschia intercambiabile a gradino a pettine (SET di coppie)
Step comb interchangeable jaw plate (SET of pair)



A	Set di 8 pezzi Set of 8 pcs.		Set di 10 pezzi Set of 10 pcs.		Set di 14 pezzi Set of 14 pcs.		Set di 14 pezzi Set of 14 pcs.		Set di 14 pezzi Set of 14 pcs.	
	3	5	3	5	3	5	3	5	3	5
	8	13	8	13	8	13	8	13	8	13
	-	-	-	18	18	18	18	18	18	18
	-	-	-	-	23	23	23	23	23	23
	-	-	-	-	28	28	28	28	28	28
B	25	30	40	50	60	60				
C	3	3	3	3	3	3				
Cod.	5.80.6E112	5.80.6E212	5.80.6E312	5.80.6E412	5.80.6E512	5.80.6E612				