

Tipo (grandezza) morsa / Vise (type) size

1
2
3
4
5
6
Art. 805

 Ganascia fissa zigrinata da un lato
 Fixed jaw one side serrated

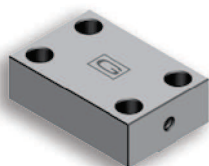

Cod.	5.80.51000	5.80.52000	5.80.53000	5.80.54000	5.80.55000	5.80.56000
------	------------	------------	------------	------------	------------	------------

Art. 805A

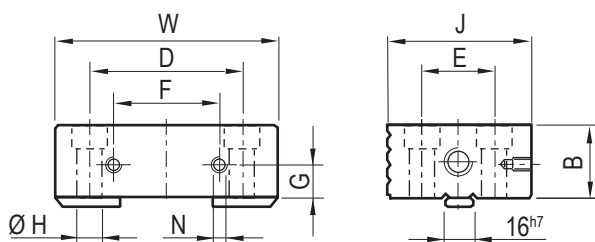
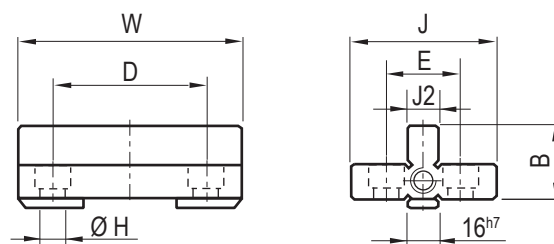
 Ganascia fissa liscia
 Smooth fixed jaw


Cod.	5.80.5A100	5.80.5A200	5.80.5A300	5.80.5A400	5.80.5A500	5.80.5A600
------	------------	------------	------------	------------	------------	------------

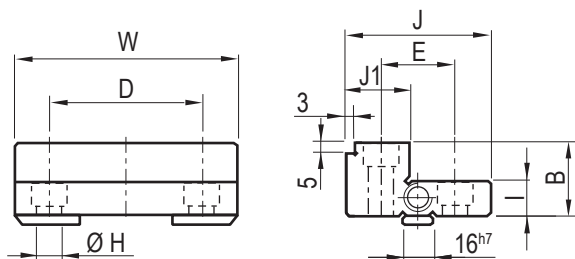
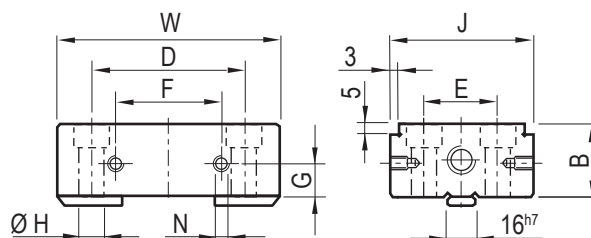
Art. 805B

 Ganascia fissa dolce
 Soft fixed jaw


Cod.	5.80.5B100	5.80.5B200	5.80.5B300	5.80.5B400	5.80.5B500	5.80.5B600
------	------------	------------	------------	------------	------------	------------

Art. 805 (Montata su Art. 860) / (Assembled on Art. 860)

Art. 805N (Montata su Art. 863) / (Assembled on Art. 863)

Art. 805O

Ganascia fissa con gradino piccolo e grande / Fixed jaw with small and large step


Art. 805F (Montata su Art. 866) / (Assembled on Art. 866)


Tipo (grandezza) morsa / Vise (type) size

mm	1	2	3	4	5	6	Tolleranze / Tolerance
W	74	94	124	144	169	189	-
J	56	64	84	98	108	108	-0,02
J1	24	24	30	38	38	38	
J2	16	16	16	16	16	16	
B	25	30	40	50	60	60	-0,02
D	56	70	92	108	126	144	-
E	32	40	50	60	68	68	-
F	40	50	65	65	65	100	-
G	10	10	15	20	25	25	-
H	9	11	13	17	17	22	-
I	12,5	15	20	25	30	30	-0,02
N	M5	M6	M6	M6	M6	M6	-

Tipo (grandezza) morsa / Vise (type) size	1	2	3	4	5	6	
Art. 805C Ganascia fissa zigrinata da ambo i lati Fixed jaw serrated on both sides		Cod. 5.80.5C100	5.80.5C200	5.80.5C300	5.80.5C400	5.80.5C500	5.80.5C600
Art. 805D Ganascia fissa con gradino 3x5 zigrinata da un lato Fixed jaw with 3x5 step on side serrated		Cod. 5.80.5D100	5.80.5D200	5.80.5D300	5.80.5D400	5.80.5D500	5.80.5D600
Art. 805E Ganascia fissa con gradino 3x5 liscia Fixed jaw with 3x5 step smooth		Cod. 5.80.5E100	5.80.5E200	5.80.5E300	5.80.5E400	5.80.5E500	5.80.5E600
Art. 805F Ganascia fissa con doppio gradino 3x5 liscia Fixed jaw with double 3x5 step smooth		Cod. 5.80.5F100	5.80.5F200	5.80.5F300	5.80.5F400	5.80.5F500	5.80.5F600
Art. 805G Ganascia fissa con doppio gradino 3x5 zigrinata Fixed jaw with double 3x5 step serrated		Cod. 5.80.5G100	5.80.5G200	5.80.5G300	5.80.5G400	5.80.5G500	5.80.5G600
Art. 805H Ganascia fissa con prisma verticale Fixed jaw with vertical prism		Cod. 5.80.5H100	5.80.5H200	5.80.5H300	5.80.5H400	5.80.5H500	5.80.5H600
Art. 805I Ganascia fissa con doppio prisma verticale Fixed jaw with double vertical prism		Cod. 5.80.5I100	5.80.5I200	5.80.5I300	5.80.5I400	5.80.5I500	5.80.5I600
Art. 805J Ganascia fissa con prisma orizzontale Fixed jaw with horizontal prism		Cod. 5.80.5J100	5.80.5J200	5.80.5J300	5.80.5J400	5.80.5J500	5.80.5J600
Art. 805K Ganascia fissa con doppio prisma orizzontale Fixed jaw with double horizontal prism		Cod. 5.80.5K100	5.80.5K200	5.80.5K300	5.80.5K400	5.80.5K500	5.80.5K600
Art. 805L Ganascia fissa con gradino Step fixed jaw		Cod. 5.80.5L100	5.80.5L200	5.80.5L300	5.80.5L400	5.80.5L500	5.80.5L600
Art. 805M Ganascia fissa con gradino zigrinata da un lato Step fixed jaw one side serrated		Cod. 5.80.5M100	5.80.5M200	5.80.5M300	5.80.5M400	5.80.5M500	5.80.5M600
Art. 805N Ganascia fissa con doppio gradino Fixed jaw with double step		Cod. 5.80.5N100	5.80.5N200	5.80.5N300	5.80.5N400	5.80.5N500	5.80.5N600
Art. 805O Ganascia fissa con gradino piccolo e grande Fixed jaw with small and large step		Cod. 5.80.5O100	5.80.5O200	5.80.5O300	5.80.5O400	5.80.5O500	5.80.5O600
Art. 805P Ganascia fissa con gradino piccolo e grande zigrin. da un lato Fixed jaw with small and large step one side serrated		Cod. 5.80.5P100	5.80.5P200	5.80.5P300	5.80.5P400	5.80.5P500	5.80.5P600
Art. 805Q Ganascia fissa doppia con gradino piccolo e grande Double fixed jaw with small and large step		Cod. 5.80.5Q100	5.80.5Q200	5.80.5Q300	5.80.5Q400	5.80.5Q500	5.80.5Q600
Art. 805R Ganascia fissa in alluminio Fixed jaw aluminium		Cod. 5.80.5R100	5.80.5R200	5.80.5R300	5.80.5R400	5.80.5R500	5.80.5R600
Art. 805T Ganascia fissa GRIP per forti serraggi GRIP fixed jaw for strongest clamping		Cod. 5.80.5T100	5.80.5T200	5.80.5T300	5.80.5T400	5.80.5T500	5.80.5T600