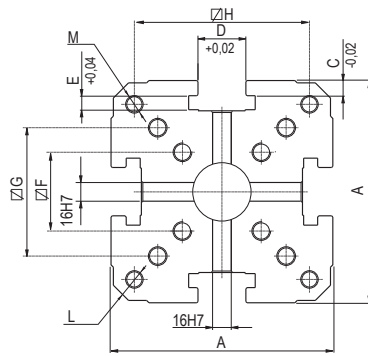
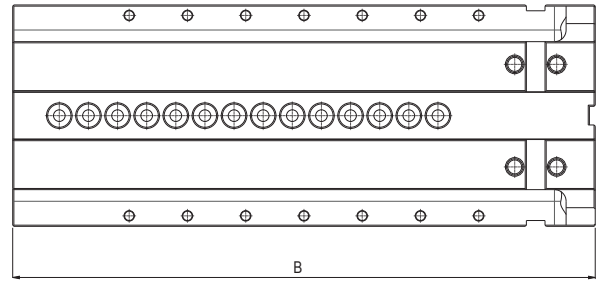


Tipo (grandezza) morsa / Vise (type) size



**Art. 701**

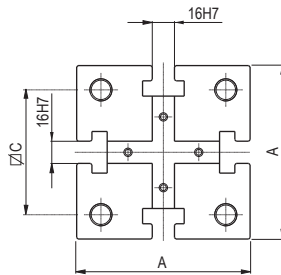


Senza alcuna dotazione  
Without accessory equipment

**Art. 701**

Corpo slittone standard  
Body for standard vise tower

Tipo (grandezza) morsa / Vise (type) size



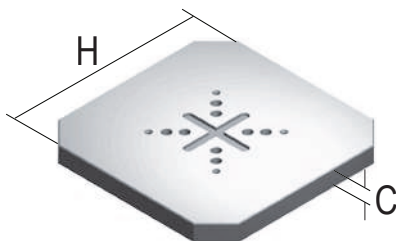
**Art. 450**



Senza alcuna dotazione  
Without accessory equipment

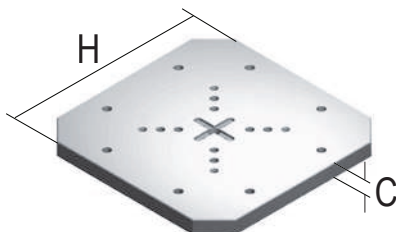
**Art. 450**

Supporto centrale per montaggio morse modulari standard in verticale. Dolce o temprato.  
Center support for vertical arrangement of standard modular vises. Soft or hardened



**Art. 828**

Piastra base per cubo-morsa  
Head plate for vise-tower



**Art. 828A**

Piastra base per cubo-morsa personalizzata  
Bussola di centraggio Art. 852 compresa  
Head plate for vise-tower tailor made  
Centering bushing Art. 852 included

	1		2		3			4				5	6
A	120		160		190			200				*	*
B	250	300	350	400	400	500	600	400	500	600	700	*	*
C	10		12		13			15				20	20
D	21		28		41			51				61	71
E	10		10		12			18				18	18
F	40		54		70			80				80	
G	70		84		110			134				134	
H	-		120		150			200				210	
L	M12		M16		M16			M20				M20	*
M	-		Ø 13		Ø 13			Ø 13				Ø 13	
kg	25	30	64	73	92	115	138	135	168	200	232	*	
Cod.	1.70.10801	1.70.11301	1.70.11552	1.70.12052	1.70.11803	1.70.12803	1.70.10803	1.70.11454	1.70.12454	1.70.13454	1.70.14454	*	
												-	-

\*A richiesta / On request

	1	2	3		4				5			6		
A	75	95	125		145				170			195		
B	270	345	420	520	455	555	655	755	495	595	695	635	735	835
C	50	60	90		110				110			*		
D	M12	M16	M16		M16				M20			*		
kg	10	19	46		68				98			145		
Cod.	1.45.01000	1.45.02000	1.45.03420	1.45.03520	1.45.04455	1.45.04555	1.45.04655	1.45.04755	1.45.05495	1.45.05595	1.45.05695	1.45.06635	1.45.06735	1.45.06835

\*A richiesta / On request

C	33	33	38	38	38	38
H	300	350	400	450	500	630
Cod.	5.82.81000	5.82.82000	5.82.83000	5.82.84000	5.82.85000	5.82.86000

C	33	33	38	38	38	38
H	300	350	400	450	500	630
Cod.	5.82.8A100	5.82.8A200	5.82.8A300	5.82.8A400	5.82.8A500	5.82.8A600

**SERRAGGIO MECCANICO CON CHIAVE DINAMOMETRICA**

**MECHANICAL CLAMPING WITH TORQUE WRENCH**

GRUPPI DI SERRAGGIO MECCANICI (**Art. 258 e similari**)

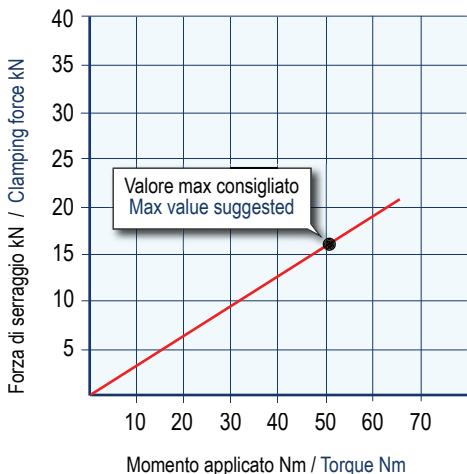
MECHANICAL CLAMPING DEVICES (**Art. 258 and similar**)

I diagrammi seguenti consentono di determinare le forze di serraggio ottenibili con le morse di varia grandezza (da 1 a 6), in funzione del momento applicato

The following diagrams give the clamping force that can be obtained with each vise type (size 1 to 6) depending on the torque

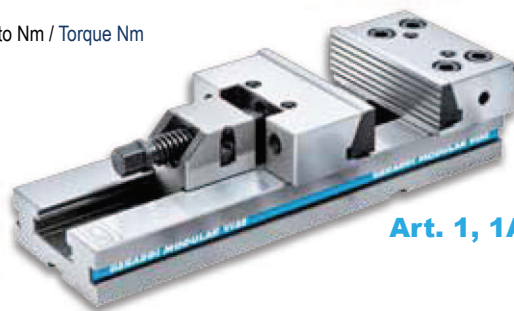
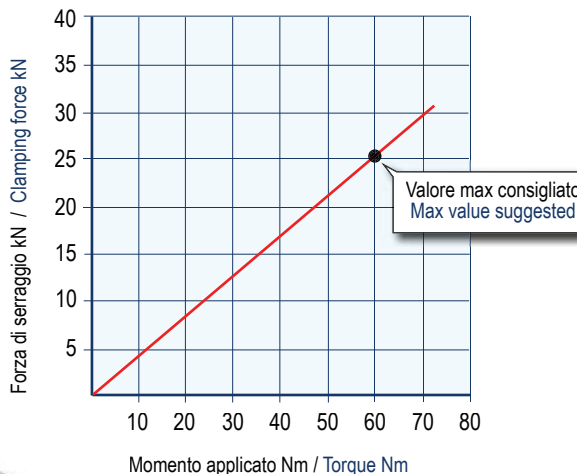
**MORSE STD e StandardFLEX TIPO 1**  
**STD and StandardFLEX VISES TYPE 1**

Vite M14 - Passo 2 mm  
Screw M14 - Pitch 2 mm



**MORSE STD e StandardFLEX TIPO 2**  
**STD and StandardFLEX VISES TYPE 2**

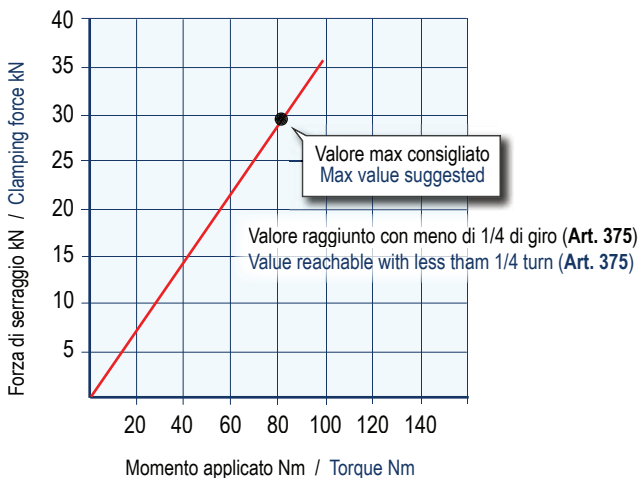
Vite Ø 18 - Passo 4 mm  
Screw Ø 18 - Pitch 4 mm



**Art. 1, 1A, 700**

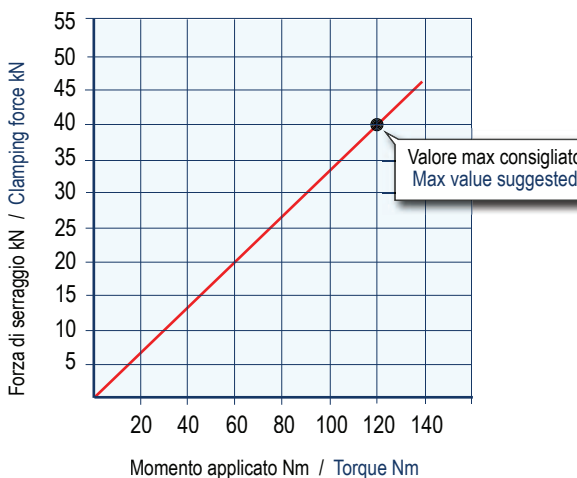
**MORSE STD e StandardFLEX TIPO 3-4**  
**STD and StandardFLEX VISES TYPE 3-4**

Vite Ø 24 - Passo 5 mm  
Screw Ø 24 - Pitch 5 mm



**MORSE STD e StandardFLEX TIPO 5-6**  
**STD and StandardFLEX VISES TYPE 5-6**

Vite Ø 30 - Passo 5 mm  
Screw Ø 30 - Pitch 5 mm



NB: Alcuni fattori, come la lubrificazione, lo staffaggio, gli attriti ed altro, possono modificare i valori indicati fino a  $\pm 10\%$ .  
Per un corretto utilizzo non superare i valori indicati nel grafico

Some factor as lubrication, clamping on the machine table, frictions and more can modify above values within a  $\pm 10\%$  range. For optimum operation do not exceed chart values.