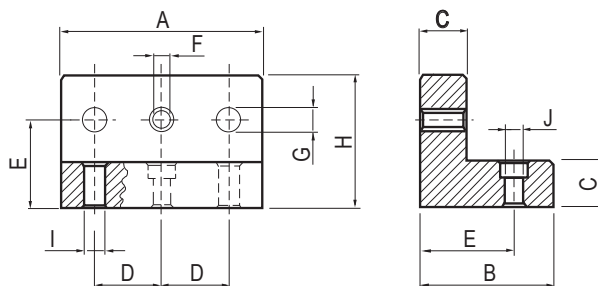
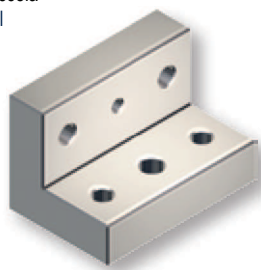
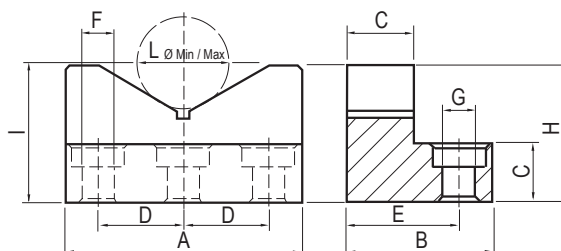
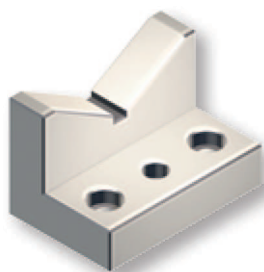


ELEMENTI MODULARI		MODULAR ELEMENTS										Cod.	
Dimensione mm / Dimensions mm		A	B	C	D	E	F	G	H	I	J		kg
Art. 66	Squadra piccola Angle small	120	80	30	40	60	M10	12	80	12	11	3,5	8.66.402210
		120	100	35	50	70	M12	16	100	16	13	6	8.66.502210

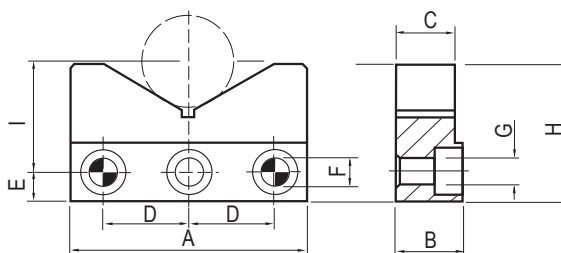


ELEMENTI MODULARI		MODULAR ELEMENTS										Cod.	
Dimensione mm / Dimensions mm		A	B	C	D	E	F	G	H	I	L		kg
Art. 68	Squadra a "V" V-block	120	80	30	40	60	12	11	80	86	30 / 180	3	8.68.402410
		150	100	35	50	70	16	12	100	98	30 / 220	5	8.68.502410



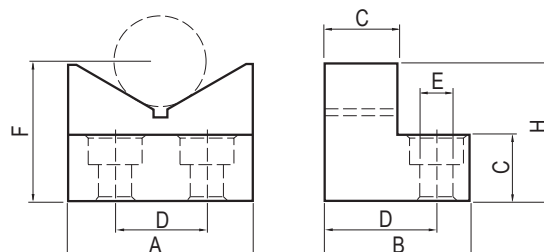
QUOTA "I" RILEVATA CON Ø60 h7 - QUOTA "I" RILEVATA CON Ø60 h7

ELEMENTI MODULARI		MODULAR ELEMENTS										Cod.	
Dimensione mm / Dimensions mm		A	B	C	D	E	F	G	H	I	L		kg
Art. 69	Piastra a "V" V-pad	120	30	27	40	20	12	11	80	66	30 / 180	3	8.69.402610
		150	35	30	50	20	16	13	100	68	30 / 220	16	8.69.502610



QUOTA "I" RILEVATA CON Ø60 h7 - QUOTA "I" RILEVATA CON Ø60 h7

ELEMENTI MODULARI		MODULAR ELEMENTS										Cod.	
Dimensione mm / Dimensions mm		A	B	C	D	E	F	G	H	I	L		kg
Art. 69A	Squadra modulare a "V" Modular V-block	98	74	35	50	16	78	50	78	-	30 / 150	3	8.69.A510180



QUOTA "I" RILEVATA CON Ø50 h7 - QUOTA "I" RILEVATA CON Ø50 h7