

Tipo (grandezza) morsa / Vise (type) size

Art. 640 Tipo / Type **1 e 2**

Morsa autocentrante o eccentrica.
Azionamento manuale
Serraggio meccanico
Self-centering or eccentric vise.
Manual operation
Mechanical clamping



	1	2
A	74	104
W	74	99
B	15	20
C	50	70
Ø D	120	160
E	35	35
F	92	120
G	20	25
H	20	40
Ø L	12	15
M	9	11
kg	4,9	11
kN	16	20
Cod.	6.64.01000	6.64.02000



AMPLIA LE TUE APPLICAZIONI TRAMITE GLI ACCESSORI MODULARI !

Art. 645B

Ganascia dolce
Soft jaw



Cod.	6.64.5B100	6.64.5B200
------	------------	------------

Art. 645C

Ganascia liscia
Smooth jaw



Cod.	6.64.5C100	6.64.5C200
------	------------	------------

Art. 645D

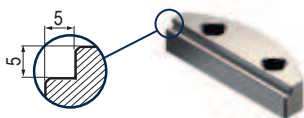
Ganascia zigrinata
Serrated jaw



Cod.	6.64.5D100	6.64.5D200
------	------------	------------

Art. 645E

Ganascia a gradino
Step jaw



Cod.	6.64.5E100	6.64.5E200
------	------------	------------

Art. 645F

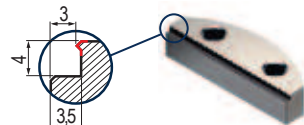
Ganascia prismatica
Prismatic jaw



Cod.	6.64.5F100	6.64.5F200
------	------------	------------

Art. 645T

Ganascia **GRIP**
GRIP jaw

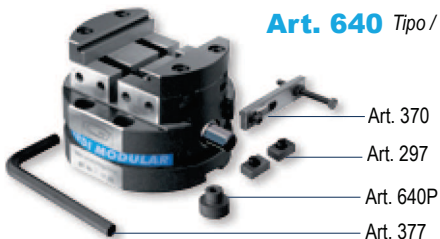


Cod.	6.64.5T100	6.64.5T200
------	------------	------------

Dotazione standard:

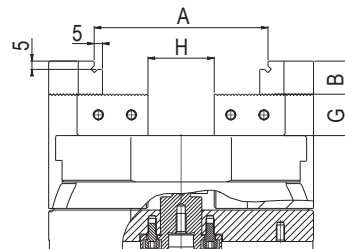
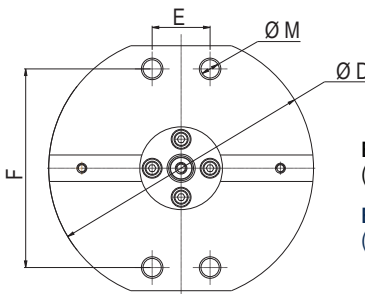
- 1 chiave esagonale Art. 377
- 1 arresto laterale Art. 370
- 1 coppia di tasselli di posizionamento Art. 297
- 1 perno di centraggio Art. 640P (Indicare dimensione in fase d'ordine)

Art. 640 Tipo / Type **1 e 2**



Standard equipment:

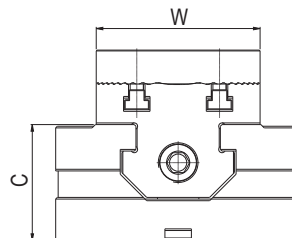
- 1 exagonal wrench Art. 377
- 1 workstop Art. 370
- 1 pair of positioning key-nuts Art. 297
- 1 positioning pin Art. 640P (Dimension to be advised at order)



Art. 640 Tipo / Type **1 e 2**

Esempio di ordine: Art. 640 tipo 1
(Tasselli 18mm + Perno di centraggio 40mm)

Example of order: Art. 640 type 1
(Positioning key-nuts 18mm + Positioning pin 40mm)



Tipo (grandezza) morsa / Vise (type) size **3**

Art. 640 Tipo / Type **3 x 166**

Morsa autocentrante o eccentrica.
Azionamento manuale. Serraggio meccanico
Self-centering or eccentric vise.
Manual operation
Mechanical clamping

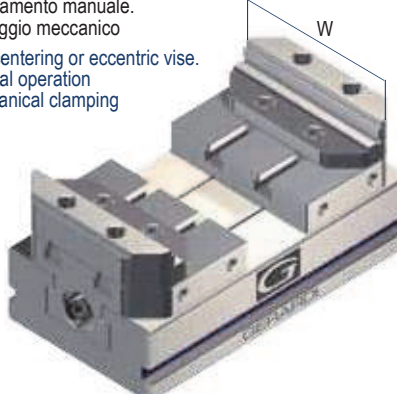


A	108
A1	20
W	138
B	30
C	58
D	166
E	120
kg	13
kN	30
Cod.	7.64.03166

Tipo (grandezza) morsa / Vise (type) size **3**

Art. 640 Tipo / Type **3 x 266**


Morsa autocentrante o eccentrica.
Azionamento manuale. Serraggio meccanico
Self-centering or eccentric vise.
Manual operation
Mechanical clamping



A	208
A1	60
W	138
B	30
C	58
D	266
E	200
kg	20
kN	30
Cod.	7.64.03266

UPGRADE YOUR VISE APPLICATIONS THROUGH MODULAR ACCESSORIES !

Art. 645B
Ganascia dolce
Soft jaw



Cod. 7.64.5B300

Art. 645C
Ganascia liscia
Smooth jaw



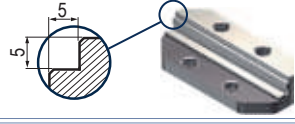
Cod. 7.64.5C300

Art. 645D
Ganascia zigrinata
Serrated jaw



Cod. 7.64.5D300

Art. 645E
Ganascia a gradino
Step jaw



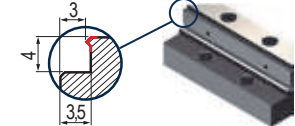
Cod. 7.64.5E300

Art. 645F
Ganascia prismatica
Prismatic jaw



Cod. 7.64.5F300

Art. 645T
Ganascia **GRIP**
GRIP jaw

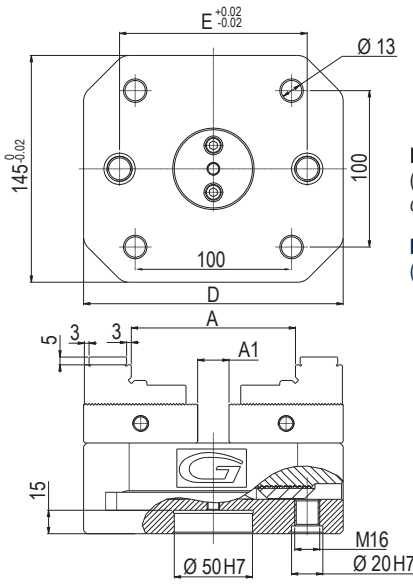


Cod. 7.64.5T300

- Dotazione standard:**
- 1 chiave a pipa Art. 375 ■ 1 chiave a "T" Art. 376
 - 1 arresto laterale Art. 370 ■ 1 spina di orientamento Art. 79
 - 1 perno di centraggio Art. 640P (Indicare dimensione in fase di ordine)



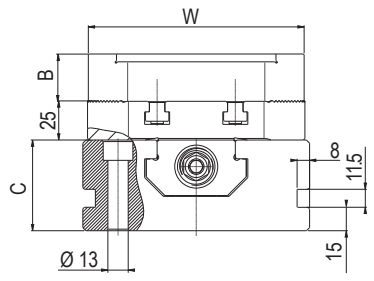
- Standard equipment:**
- 1 box wrench Art. 375 ■ 1 "T" wrench Art. 376
 - 1 workstop Art. 370 ■ 1 straight pin Art. 79
 - 1 positioning pin Art. 640P (Dimension to be advised at order)



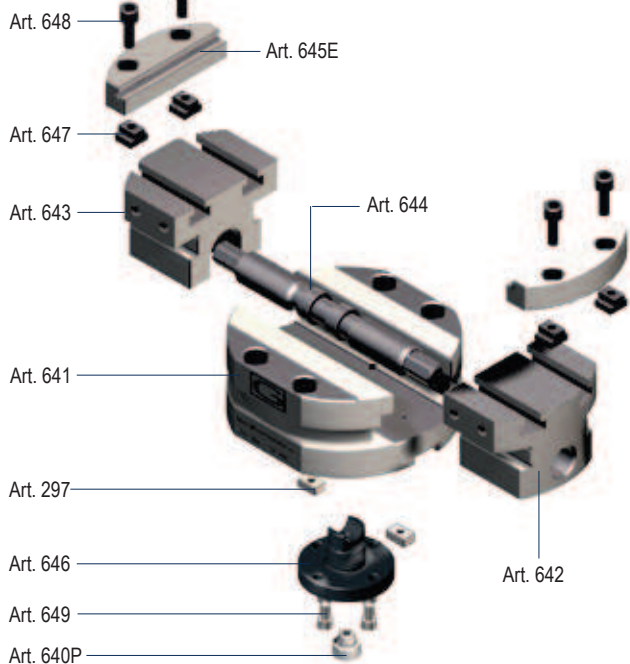
Art. 640 Tipo / Type **3**

Esempio di ordine: Art. 640 tipo 3 x 166
(Spina di orientamento 16mm + Perno di centraggio 40mm)

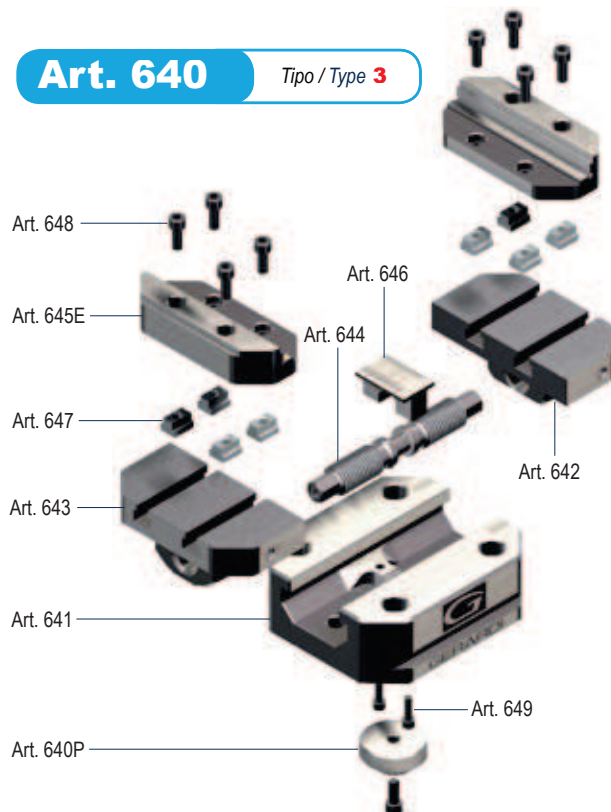
Example of order: Art. 640 type 3 x 166
(Straight pin 16mm + Positioning pin 40mm)



Art. 640 Tipo / Type **1 e 2**



Art. 640 Tipo / Type **3**



Tipo / Type		1	2
Art. 641 Corpo base Base body	Cod.	6.64.11000	6.64.12000
Art. 642 Slitta integrale destra Solid slide right hand	Cod.	6.64.21000	6.64.22000
Art. 643 Slitta integrale sinistra Solid slide left hand	Cod.	6.64.31000	6.64.32000
Art. 644 Vite di bloccaggio Main screw	Cod.	6.64.41000	6.64.42000
Art. 645E Ganascia a gradino Step jaw	Cod.	6.64.5E100	6.64.5E200
Art. 646 Forcella Yoke	Cod.	6.64.61000	6.64.62000
Art. 647 Dado a T (Cad.) T nut (Each)	Cod.	6.64.71000	6.64.72000
Art. 648 VTCEI per ganaascia Hex socked head screw for jaw	Cod.	6.64.81000	6.64.82000
Art. 649 VTCEI per forcella Hex socked head screw for yoke	Cod.	6.64.91000	6.64.92000
Art. 640P Perno di posizionamento Positioning pin	Cod.	6.64.0P100	6.64.0P200

Tipo / Type		3 x 166	3 x 266
Art. 641 Corpo base Base body	Cod.	7.64.13166	7.64.13266
Art. 642 Slitta integrale destra Solid slide right hand	Cod.	7.64.23166	7.64.23266
Art. 643 Slitta integrale sinistra Solid slide left hand	Cod.	7.64.33166	7.64.33266
Art. 644 Vite di bloccaggio Main screw	Cod.	7.64.43166	7.64.43266
Art. 645E Ganascia a gradino Step jaw	Cod.	7.64.5E300	
Art. 646 Forcella Yoke	Cod.	7.64.63000	
Art. 647 Dado a T (Cad.) T nut (Each)	Cod.	7.64.73000	
Art. 648 VTCEI per ganaascia Hex socked head crew for jaw	Cod.	7.64.83000	
Art. 649 VTCEI per forcella Hex socked head crew for yoke	Cod.	7.64.93000	
Art. 640P Perno di posizionamento Positioning pin	Cod.	7.64.0P300	

DIAGRAMMI CON FORZE DI SERRAGGIO
DIAGRAM WITH CLAMPING FORCE
GRUPPI DI SERRAGGIO MECCANICI

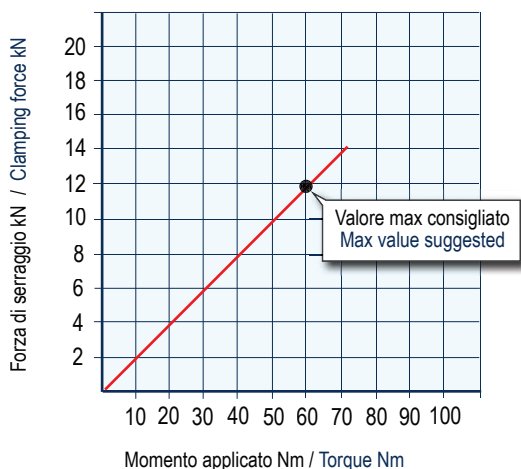
I diagrammi seguenti consentono di determinare le forze di serraggio ottenibili con le morse di varia grandezza (da 1 a 3), in funzione della forza applicata

MECHANICAL CLAMPING DEVICES

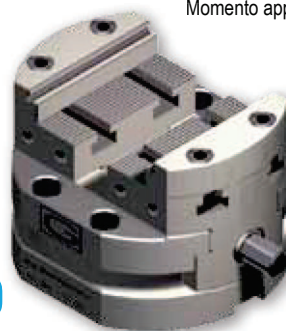
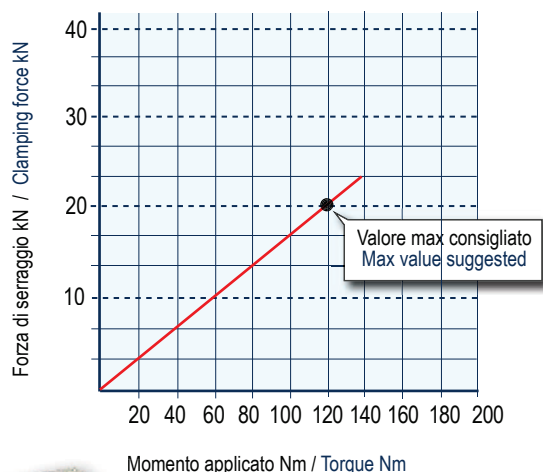
The following diagrams give the clamping force that can be obtained with each vise type (size 1 to 3) as a function of wrenching force

**MORSE MULTITASKING TIPO 1
MULTITASKING VISES TYPE 1**

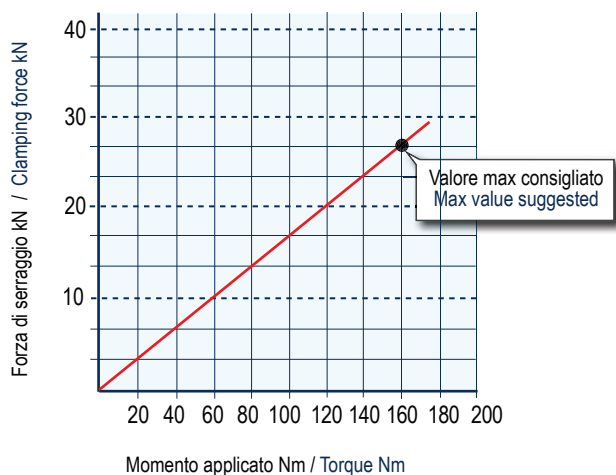
Chiave dinamometrica BETA 610/10X
Torque wrench BETA 610/10X


Art. 640
Tipo / Type 1 e 2
**MORSE MULTITASKING TIPO 2
MULTITASKING VISES TYPE 2**

Chiave dinamometrica BETA 610/10X
Torque wrench BETA 610/10X


**MORSE MULTITASKING TIPO 3
MULTITASKING VISES TYPE 3**

Chiave dinamometrica BETA 610/10X
Torque wrench BETA 610/10X


Art. 640
Tipo / Type 3


NB: Alcuni fattori, come la lubrificazione, lo staffaggio, gli attriti ed altro, possono modificare i valori indicati fino a $\pm 10\%$. Per un corretto utilizzo non superare i valori indicati nel grafico

Some factor as lubrication, clamping on the machine table, frictions and more can modify above values within a $\pm 10\%$ range. For optimum operation do not exceed chart values.