

Tipo (grandezza) morsa / Vise (type) size

Art. 640J

Tipo / Type **1 e 2**

Morsa autocentrante.
Azionamento manuale
Serraggio meccanico

Self-centering vise.
Manual operation
Mechanical clamping



	1	2
Ø A	30 ÷ 45	45 ÷ 70
W	74	99
B	60	80
C	50	70
Ø D	120	160
E	35	35
F	92	120
G	30	40
Ø L	12	15
Ø M	9	11
kg	5	10
kN	20	26
Cod.	7.64.0J100	7.64.0J200



AMPLIA LE TUE APPLICAZIONI TRAMITE GLI ACCESSORI MODULARI !

Art. 655B

Piastra ganascia dolce
Soft jaw-plate



Cod.	7.65.5B100	7.65.5B200
------	------------	------------

Art. 655C

Piastra ganascia liscia
Smooth jaw-plate



Cod.	7.65.5C100	7.65.5C200
------	------------	------------

Art. 655D

Piastra ganascia zigrinata
Serrated jaw-plate



Cod.	7.65.5D100	7.65.5D200
------	------------	------------

Art. 655F

Piastra ganascia prismatica
Prismatic jaw-plate



Ø	10 ÷ 18	10 ÷ 30
Cod.	7.65.5F118	7.65.5F230
Ø	15 ÷ 23 * 23 ÷ 30	25 ÷ 45
Cod.	7.65.5F123	7.65.5F245

* Per Ø 23÷30 ingombro max. (D1) = 132mm Ø (anziché 120mm)
For Ø 23÷30 max overall dimensin (D1) Ø132mm (instead of 120mm)

Art. 655J

Coppia di ganasce integrali prismatiche
Prismatic solid jaws (1 pair)



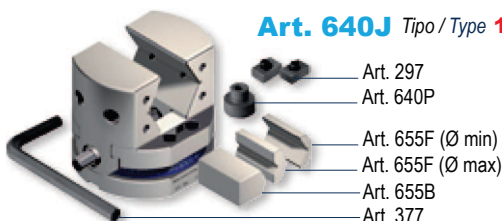
Da usare in coppia
To be used as a pair

Cod.	7.65.5J100	7.65.5J200
------	------------	------------

Dotazione standard:

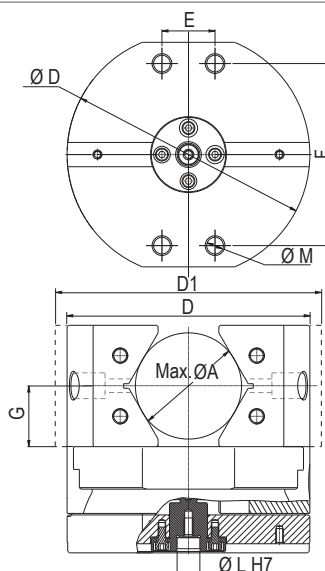
- 1 chiave esagonale Art. 377 ■ 1 arresto laterale Art. 370
- 2 coppie di piastre Art. 655F (Tot. 4 pezzi)
- 1 coppia di piastre dolci Art. 655B
- 1 coppia di tasselli di posizionamento Art. 297
- 1 perno di centraggio Art. 640P (Indicare dimensione in fase di ordine)

Art. 640J Tipo / Type **1 e 2**



Standard equipment:

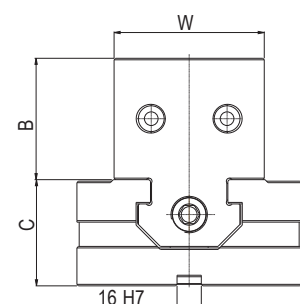
- 1 exagonal wrench Art. 377 ■ 1 workstop Art. 370
- 2 pair of plates Art. 655F (Tot. 4 pcs)
- 1 pair soft jaw plates Art. 655B
- 1 pair of positioning key-nuts Art. 297 ■ 1 positioning pin Art. 640P (Dimension to be advised at order)



Art. 640J Tipo / Type **1 e 2**

Esempio di ordine: Art. 640J tipo 2
(Tasselli 16mm + Perno di centraggio 30mm)

Example of order: Art. 640J type 2
(Positioning key-nut s16mm + Positioning pin 30mm)

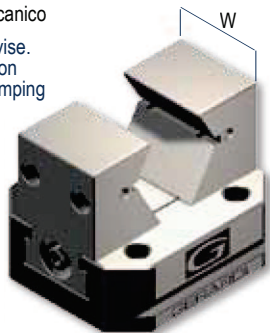


Tipo (grandezza) morsa / Vise (type) size **3**

Art. 640J Tipo / Type **3 x 166**

Morsa autocentrante.
Azionamento manuale.
Serraggio meccanico

Self-centering vise.
Manual operation
Mechanical clamping



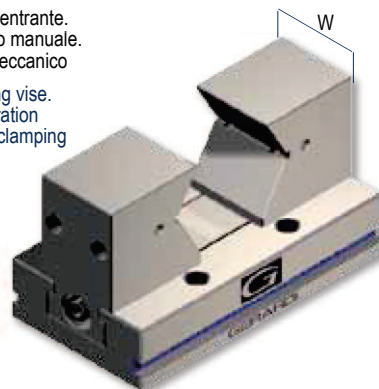
Ø A	44 ÷ 68
W	78
B	75
C	58
D	166
E	120
F	-
G	45
L	
kg	15
kN	30
Cod.	7.64.0J310

Tipo (grandezza) morsa / Vise (type) size **3**

Art. 640J Tipo / Type **3 x 266**

Morsa autocentrante.
Azionamento manuale.
Serraggio meccanico

Self-centering vise.
Manual operation
Mechanical clamping



Ø A	48 ÷ 102
W	78
B	95
C	58
D	266
E	120
F	200
G	55
L	66
kg	22
kN	30
Cod.	7.64.0J320

UPGRADE YOUR VISE APPLICATIONS THROUGH MODULAR ACCESSORIES !

Art. 655B

Piastra ganascia dolce
Soft jaw-plate



Cod. 7.65.5B316

Art. 655C

Piastra ganascia liscia
Smooth jaw-plate



Cod. 7.65.5C316

Art. 655D

Piastra ganascia zigrinata
Serrated jaw-plate



Cod. 7.65.5D316

Art. 655F

Piastra ganascia prismatica
Prismatic jaw-plate



Tipo / Type 3 x 166	12 ÷ 32	14 ÷ 34	16 ÷ 36	18 ÷ 45
Ø Min / Ø Max				
Tipo / Type 3 x 266	12 ÷ 38	14 ÷ 48	16 ÷ 58	24 ÷ 65
Ø Min / Ø Max				
Cod	7.65.5F330	7.65.5F335	7.65.5F345	7.65.5F350

Art. 655J

Coppia di ganasce integrali prismatiche
Prismatic solid jaws (1 pair)



Da usare in coppia
To be used as a pair

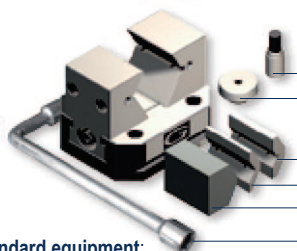
Ø	44 ÷ 68	48 ÷ 102
Cod.	7.65.5J316	7.65.5J326

Dotazione standard:

- 1 chiave a pipa Art. 375 ■ 1 arresto laterale Art. 370
 - 2 coppie di piastre Art. 655F (Tot. 4 pezzi)
 - 1 coppia di piastre dolci Art. 655B
 - 1 spina di orientamento Art. 79 ■ 1 perno di centraggio Art. 640P
- (Indicare dimensione in fase di ordine)

Art. 640J

Tipo / Type **3**

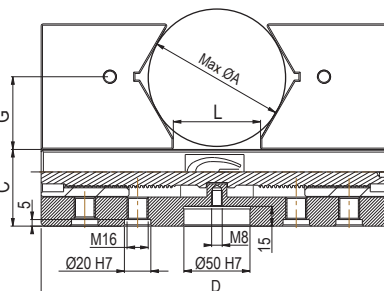
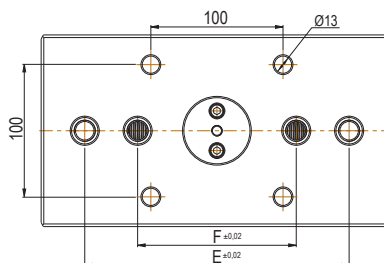


Art. 640P
Art. 79

Art. 655F (Ø min)
Art. 655F (Ø max)
Art. 655B
Art. 375

Standard equipment:

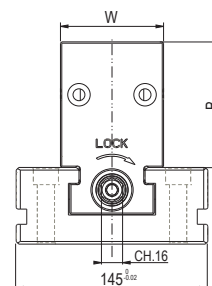
- 1 box wrench Art. 375 ■ 1 workstop Art. 370
 - 2 pair of plates Art. 655F (Tot. 4 pcs)
 - 1 pair soft jaw plates Art. 655B
 - 1 straight pin Art. 79 ■ 1 positioning pin Art. 640P
- (Dimension to be advised at order)



Art. 640J Tipo / Type **3**

Esempio di ordine: Art. 640J tipo 3 x 266
(Spina di orientamento 16mm + Perno di centraggio 30mm)

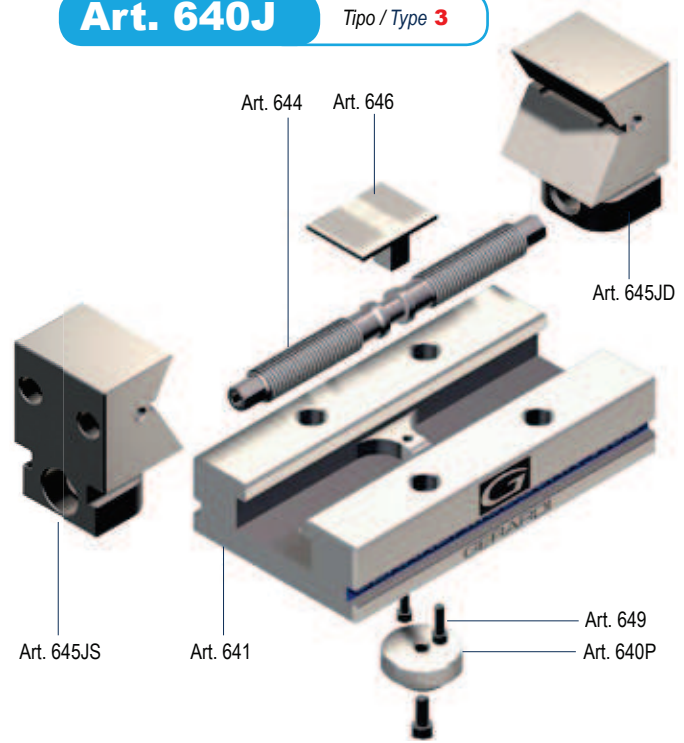
Example of order: Art. 640J type 3 x 266
(Straight pin 16mm + Positioning pin 30mm)



Art. 640J Tipo / Type **1 e 2**



Art. 640J Tipo / Type **3**



Tipo / Type	1	2
-------------	---	---

Art. 641	Cod.	6.64.11000	6.64.21000
Corpo base Base body			

Art. 644	Cod.	6.64.41000	6.64.42000
Vite di bloccaggio Main screw			

Art. 645JD *	Cod.	7.64.5JD10	7.64.5JD20
Ganascia integrale prismatica dx Solid prismatic right jaw			

Art. 645JS *	Cod.	7.64.5JS10	7.64.5JS20
Ganascia integrale prismatica sx Solid prismatic left jaw			

Art. 646	Cod.	6.64.61000	6.64.462000
Forcella Yoke			

Art. 649	Cod.	6.64.91000	6.64.492000
VTCEI per forcella Hex socketed head crew for yoke			

Art. 640P	Cod.	6.64.0P100	6.64.0P200
Perno di posizionamento Positioning pin			

Tipo / Type	3 x 166	3 x 266
-------------	---------	---------

Art. 641	Cod.	7.64.13166	7.64.13266
Corpo base Base body			

Art. 644	Cod.	7.64.43166	7.64.43266
Vite di bloccaggio Main screw			

Art. 645JD *	Cod.	7.64.5JD31	7.64.5JD32
Ganascia integrale prismatica dx Solid prismatic right jaw			

Art. 645JS *	Cod.	7.64.5JS31	7.64.5JS32
Ganascia integrale prismatica sx Solid prismatic left jaw			

Art. 646	Cod.	7.64.63166	7.64.63266
Forcella Yoke			

Art. 649	Cod.	7.64.93000
VTCEI per forcella Hex socketed head crew for yoke		

Art. 640P	Cod.	7.64.0P000
Perno di posizionamento Positioning pin		

* **Art. 645JD** + **Art. 645JS** = **Art. 655J**

7

DIAGRAMMI CON FORZE DI SERRAGGIO
DIAGRAM WITH CLAMPING FORCE
GRUPPI DI SERRAGGIO MECCANICI

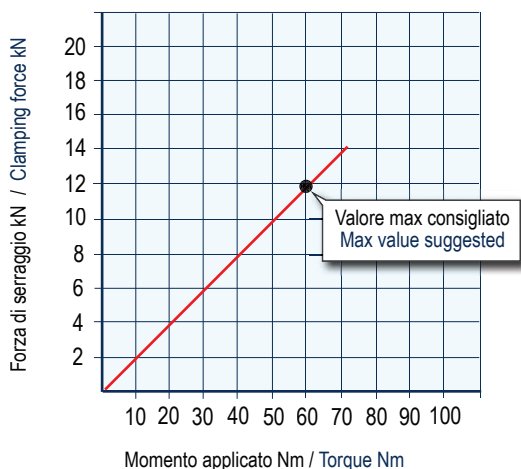
I diagrammi seguenti consentono di determinare le forze di serraggio ottenibili con le morse di varia grandezza (da 1 a 3), in funzione della forza applicata

MECHANICAL CLAMPING DEVICES

The following diagrams give the clamping force that can be obtained with each vise type (size 1 to 3) as a function of wrenching force

**MORSE MULTITASKING TIPO 1
MULTITASKING VISES TYPE 1**

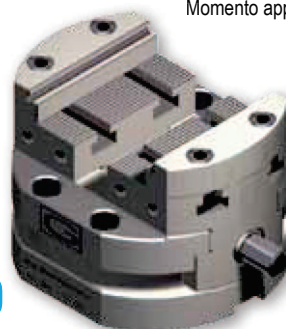
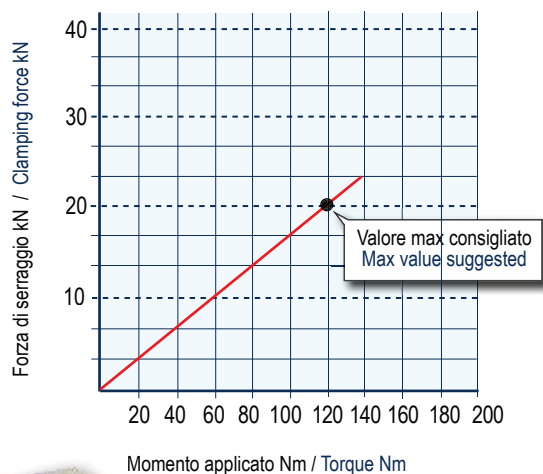
Chiave dinamometrica BETA 610/10X
Torque wrench BETA 610/10X



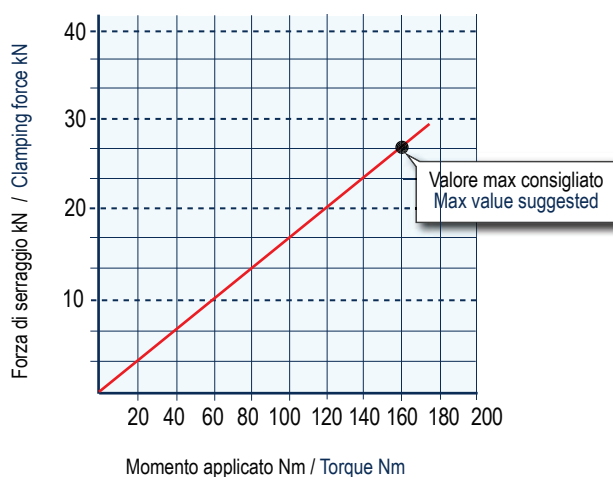
Art. 640 Tipo / Type **1 e 2**

**MORSE MULTITASKING TIPO 2
MULTITASKING VISES TYPE 2**

Chiave dinamometrica BETA 610/10X
Torque wrench BETA 610/10X


**MORSE MULTITASKING TIPO 3
MULTITASKING VISES TYPE 3**

Chiave dinamometrica BETA 610/10X
Torque wrench BETA 610/10X



Art. 640 Tipo / Type **3**



NB: Alcuni fattori, come la lubrificazione, lo staffaggio, gli attriti ed altro, possono modificare i valori indicati fino a $\pm 10\%$. Per un corretto utilizzo non superare i valori indicati nel grafico

Some factor as lubrication, clamping on the machine table, frictions and more can modify above values within a $\pm 10\%$ range. For optimum operation do not exceed chart values.