

Tipo (grandezza) / (type) size

Base / Base  
Ganascia / Jaw

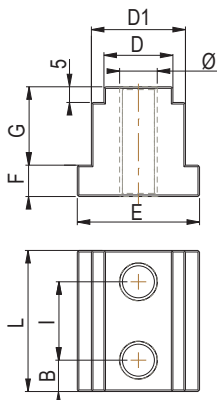
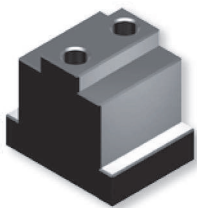
Ti po - Type 2  
Tipo - Type 1

Tipo - Type 3  
Tipo - Type 1

Tipo - Type 3  
Tipo - Type 2

### Art. 604S

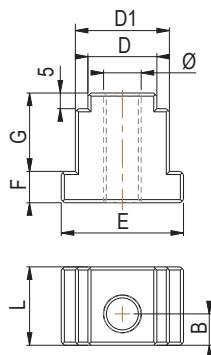
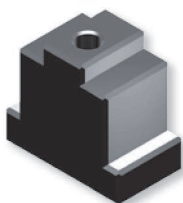
Dado a "T" per ganascia fissa  
"T" nut for fixed jaw



B	6	6	10
D	14	14	22
D1	22	30	30
E	34	39	39
F	10	10	10
G	19	25	25
I	18	18	25
L	30	30	45
Ø	M8	M8	M12
Cod	6.60.4S210	6.60.4S310	6.60.4S320

### Art. 605Q

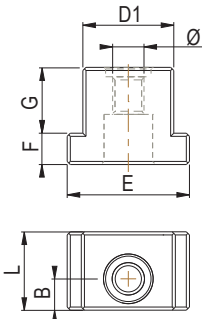
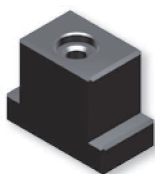
Dado a "T" per cuneo di posizionamento  
"T" nut for positioning wedge



B	9	9	10
D	14	14	22
D1	22	30	30
E	34	39	39
F	10	10	10
G	19	25	25
I	-	-	-
L	22	22	25
Ø	M8	M8	M12
Cod	6.60.5Q210	6.60.5Q310	6.60.5Q320

### Art. 605R

Dado a "T" per cuneo di spinta  
"T" nut for clamping wedge



B	9	9	10
D	-	-	-
D1	21	29	29
E	34	39	39
F	10	10	10
G	15	21	21
I	-	-	-
L	21	21	25
Ø	M8	M8	M10
Cod	6.60.5R210	6.60.5R310	6.60.5R320

Dimensioni mm / Dimension mm

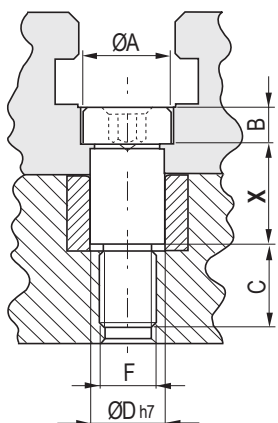
1

2

3

### Art. 81

Vite calibrata a colletto per morse Multiflex  
Shoulder calibrated screw for Multiflex vises



ØA	13	20	24
B	8	8	12
C	46	65	80
ØD	10	16	16
F	M8	M12	M12
X	25	40	50
Cod	6.81.11025	6.81.21640	6.81.21650