

Tipo (grandezza) morsa / Vise (type) size	1	2	3
-------------------------------------------	---	---	---

**Art. 604**

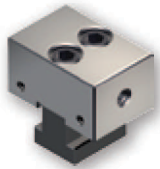
Ganascia fissa (1 lato liscia, 1 lato zigrinata) per morsa Art. 600  
Fixed jaw (1 side smooth, 1 side serrated) for vise Art. 600



kg	0,4	1,35	3,84
Cod.	6.60.41000	6.60.42000	6.60.43000

**Art. 604G**

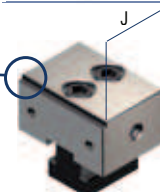
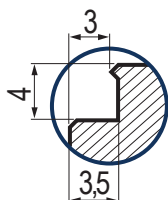
Ganascia fissa liscia da entrambi i lati, per morsa Art. 611 e cubi Art. 612  
Fixed smooth jaws both sides, for vise Art. 611 and cubes Art. 612



kg	0,5	1,40	3,90
Cod.	6.60.4G100	6.60.4G200	6.60.4G300

**Art. 604T**

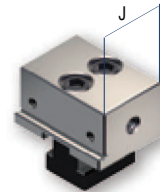
Ganascia fissa **GRIP** per morsa Art. 606T  
Fixed **GRIP** jaw for vise Art. 606T



J	38	50	70
Cod.	6.60.4T100	6.60.4T200	6.60.4T300

**Art. 608**

Ganascia fissa con gradino per morsa Art. 606  
Fixed step jaw for vise Art. 606



J	38	50	70
kg	0,45	1,4	4
Cod.	6.60.81000	6.60.82000	6.60.83000

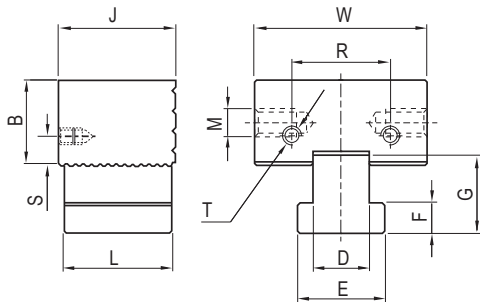
**Art. 614T**

Ganascia fissa con doppio gradino  
Fixed jaw with double step



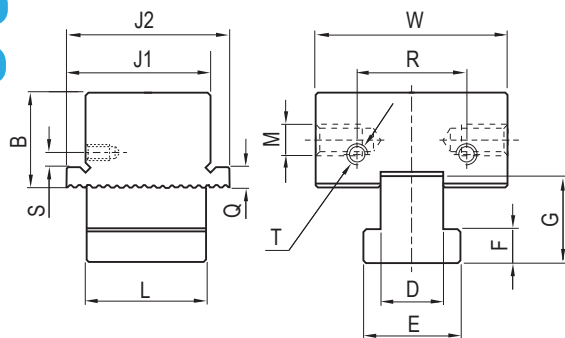
Cod.	6.61.4T100	6.61.4T200	6.61.4T300
------	------------	------------	------------

**Art. 604**



**Art. 608**

**Art. 614T**



Art.	1	2	3
W	49	74	99
B	25	40	60
D	14	22	30
E	22	35	48
F	8	14	21
G	21	33	46
J	38	50	70
J1	43	55	75
J2	48	60	80
L	30	45	60
M	M10	M10	M10
Q	5	8	10
R	30	50	50
S	7	10	10
T	M5	M6	M6

Tipo (grandezza) morsa / Vise (type) size		1	2	3	
<b>Art. 604</b>	Ganascia fissa / Fixed jaws		Cod. 6.60.41000	6.60.42000	6.60.43000
<b>Art. 604A</b>	Ganascia fissa (un lato liscio e uno zigrinato) Fixed jaw (1 side smooth, 1 side serrated)		Cod. 6.60.4A100	6.60.4A200	6.60.4A300
<b>Art. 604B</b>	Dado a "T" per ganascia fissa / "T" nut for fixed jaw		Cod. 6.60.4B100	6.60.4B200	6.60.4B300
<b>Art. 604C</b>	Vite TCEI fissaggio ganascia fissa Hex socket head screw for fixed jaw		Cod. 6.60.4C100	6.60.4C200	6.60.4C300
<b>Art. 605A</b>	Cuneo di posizionamento / Positioning wedge		Cod. 6.60.5A100	6.60.5A200	6.60.5A300
<b>Art. 605AS</b>	Cuneo di posizionamento zigrinato Serrated positioning wedge		Cod. 6.60.5AS10	6.60.5AS20	6.60.5AS30
<b>Art. 605B</b>	Cuneo di spinta / Clamping wedge		Cod. 6.60.5B100	6.60.5B200	6.60.5B300
<b>Art. 605BS</b>	Cuneo di spinta zigrinato / Serrated clamping wedge		Cod. 6.60.5BS10	6.60.5BS20	6.60.5BS30
<b>Art. 605C</b>	Dado a "T" per cuneo di posizionamento "T" nut for positioning wedge		Cod. 6.60.5C100	6.60.5C200	6.60.5C300
<b>Art. 605D</b>	Dado a "T" per cuneo di spinta "T" nut for clamping wedge		Cod. 6.60.5D100	6.60.5D200	6.60.5D300
<b>Art. 605E</b>	Vite TCEI / TCEI screw		Cod. 6.60.5E100	6.60.5E200	6.60.5E300
<b>Art. 605F</b>	Anello elastico / Seeger		Cod. 6.60.5F100	6.60.5F200	6.60.5F300
<b>Art. 605G1</b>	Vite a gradino / Step screw		Cod. 6.60.5G101		6.60.5G103
<b>Art. 605G2</b>	Perno a molla / Spring pin		Cod. 6.60.5G201	6.60.5G202	6.60.5G203
<b>Art. 605G3</b>	Molla / Spring		Cod. 6.60.5G301		6.60.5G303
<b>Art. 605H</b>	Molla / Spring		Cod. 6.60.5H100	6.60.5H200	6.60.5H300
<b>Art. 605I</b>	Cuneo a spinta dolce / Soft clamping wedge		Cod. 6.60.5I100	6.60.5I200	6.60.5I300
<b>Art. 605L</b>	Cuneo di spinta a "V" / "V" clamping wedge		Cod. 6.60.5L100	6.60.5L200	6.60.5L300
<b>Art. 605M</b>	Rondella / Washer		Cod. 6.60.5M100	6.60.5M200	6.60.5M300
<b>Art. 605N</b>	Anello elastico / Seeger		Cod. 6.60.5N100	6.60.5N200	6.60.5N300

