

Tipo (grandezza) morsa / Vise (type) size	1					2					3			
---	---	--	--	--	--	---	--	--	--	--	---	--	--	--

Art. 603

Corpo base cubo
Cube base body

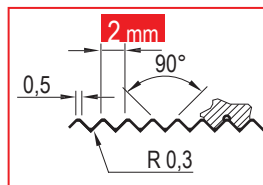
$C^{-0,02}$	100					150			230	150	210	240		240			
D	300	400	500	600	700	400	500	600	600	700	700	700	800	700	800	900	1000
$G^{-0,02}$	50					75			75	75	75		100				
$\varnothing I^{H7}$	25					50			50	50	50		50				
$L^{-0,02}$	20					20			20	20	20		20				
kg	15,4	20,5	25,6	30,7	35,8	44,8	56	67,2	110	78,4	115	143	163	164	188	211	235
Cod.	6.60.31300	6.60.31400	6.60.31500	6.60.31600	6.60.31700	6.60.32400	6.60.32500	6.60.32600	6.60.32601	6.60.32700	6.60.32701	6.60.32702	6.60.32800	6.60.33700	6.60.33800	6.60.33900	6.60.33100

I prezzi su fondo rosso sono **comprensivi di base integrale**
Prices on the red background **include the solid head plate with the vise-tower**

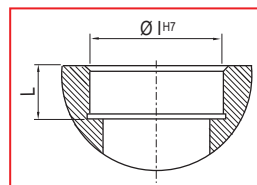


Art. 603

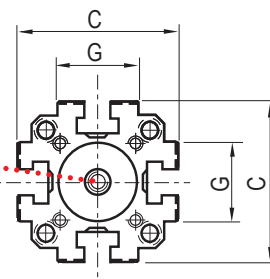
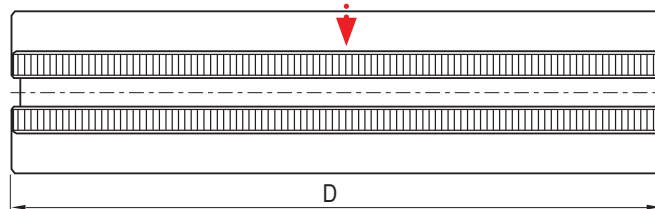
Corpo cubo semplice
Simple cube body



2 mm =
Passo delle righe
Rows pitch

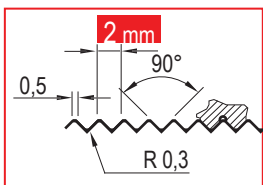


Foro di centraggio
Centering hole



Art. 603

Corpo cubo con base integrale
Cube body with integral base



2 mm =
Passo delle righe
Rows pitch

