

## CORPI GANASCE PIANE / BODY - STRAIGHT JAWS

Tipo (grandezza) morsa / Vise (type) size

### Art. 315

Corpo ganascia fissa. Larghezza normale  
 Body fixed jaw. Normal width



Cod.	1	2	3	4	5	6
1.35.11800	1.35.21800	1.35.31800	1.35.41800	1.35.51800	1.35.61800	

### Art. 316

Corpo ganascia fissa. Larghezza ridotta rettificata  
 Body fixed jaw. Narrow width ground

Cod.	1	2	3	4	5	6
1.35.12100	1.35.22100	1.35.32100	1.35.42100	1.35.52100	1.35.62100	

### Art. 318

Corpo ganascia fissa doppia. Larghezza normale  
 Double body fixed jaw. Normal width



Cod.	1	2	3	4	5	6
1.35.12700	1.35.22700	1.35.32700	1.35.42700	1.35.52700	1.35.62700	

### Art. 319

Corpo ganascia fissa doppia. Larghezza ridotta rettificata  
 Double body fixed jaw. Narrow width ground

Cod.	1	2	3	4	5	6
1.35.13000	1.35.23000	1.35.33000	1.35.43000	1.35.53000	1.35.63000	

### Art. 321

Corpo ganascia mobile guidata. Larghezza normale  
 Body guided movable jaw. Normal width



Cod.	1	2	3	4	5	6
1.36.11600	1.36.21600	1.36.31600	1.36.41600	1.36.51600	1.36.61600	

### Art. 322

Corpo ganascia mobile guidata. Larghezza ridotta rettificata  
 Body guided movable jaw. Narrow width ground

Cod.	1	2	3	4	5	6
1.36.12200	1.36.22200	1.36.32200	1.36.42200	1.36.52200	1.36.62200	

### Art. 323

Corpo ganascia mobile oscillante. Larghezza normale  
 Body floating movable jaw. Normal width



Cod.	1	2	3	4	5	6
1.36.11300	1.36.21300	1.36.31300	1.36.41300	1.36.51300	1.36.61300	

### Art. 324

Corpo ganascia mobile oscillante. Larghezza ridotta rettificata  
 Body floating movable jaw. Narrow width ground

Cod.	1	2	3	4	5	6
1.36.11900	1.36.21900	1.36.31900	1.36.41900	1.36.51900	1.36.61900	

## CORPI GANASCE PER PIASTRE INTERCAMBIABILI MANUALMENTE JAW BODIES FOR QUICK INTERCHANGEABLE JAW PLATES

### Art. 300A

Corpo ganascia fissa  
 Fixed jaw body



Cod.	1	2	3	4	5	6
1.30.0A100	1.30.0A200	1.30.0A300	1.30.0A400	1.30.0A500	1.30.0A600	

### Art. 303A

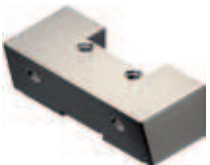
Corpo ganascia fissa doppia  
 Double fixed jaw body



Cod.	1	2	3	4	5	6
1.30.3A100	1.30.3A200	1.30.3A300	1.30.3A400	1.30.3A500	1.30.3A600	

### Art. 306A

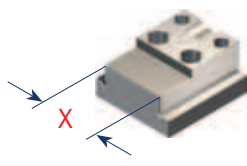
Corpo ganascia mobile guidata  
 Guided movable jaw body



Cod.	1	2	3	4	5	6
1.30.6A100	1.30.6A200	1.30.6A300	1.30.6A400	1.30.6A500	1.30.6A600	

### Art. 306B

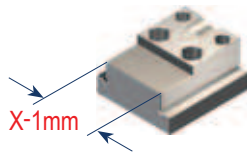
Pattino per ganasce mobili guidate  
 Sliding plate for guided movable jaw



Cod.	1	2	3	4	5	6
1.30.6B100	1.30.6B200	1.30.6B300	1.30.6B400	1.30.6B500	1.30.6B600	

### Art. 306C

Pattino per ganasce mobili oscillanti  
 Sliding plate for floating movable jaw



Cod.	1	2	3	4	5	6
1.30.6C100	1.30.6C200	1.30.6C300	1.30.6C400	1.30.6C500	1.30.6C600	