

## ATTREZZI e DOTAZIONI / TOOLS and EQUIPMENT

Tipo (grandezza) morsa / Vise (type) size

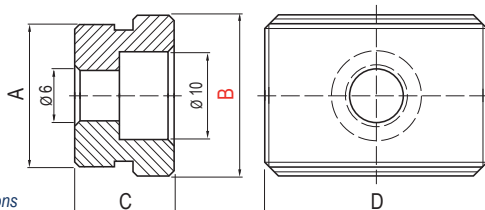
1 2 3 4 5 6

### Art. 297

Coppia di tasselli di posizionamento completi di vite M5 x 10 / **Specificare sempre quota B**  
Pair of positioning key-nuts with M5 x 10 clamping scre / **Specify always B dimension**



Altri tipi e misure  
fornibili a richiesta  
Other types and dimensions  
available on request



A	16									
B	10	12	14	16	18	20	22	24	28	36
C	10	10	10	10	10	12	12	12	12	12
D	25									
Cod.	2.29.71000									

### Art. 325

Chiave esagonale a bussola  
Hexagon bushing



CH



CH	14	16	17	18	19	21
Cod.	0.09.32514	0.09.32516	0.09.32517	0.09.32518	0.09.32519	0.09.32521
CH	22	24	27	30	32	-
Cod.	0.09.32522	0.09.32524	0.09.32527	0.09.32530	0.09.32532	-

### Art. 357

Chiave dinamometrica digitale a cricchetto e bussola  
Torque wrench digital ratchet type with hexagon

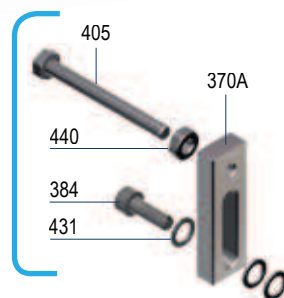


	606 / 10x	608 / 3x
Cod.	2.35.71606	2.35.75606

### Art. 370

Arresto laterale completo  
Complete workstop

Art. 370



Cod.	2.37.01000	2.37.03000	2.37.05000
------	------------	------------	------------

### Art. 405

Vite principale per arresto laterale (Ricambio)  
Main bolt for workstop (Spare)

### Art. 370A

Staffa per arresto laterale (Ricambio)  
Klamps for workstop (Spare)

Cod.	1.77.10120	1.77.16180
------	------------	------------

Cod.	2.37.0A100	2.37.0A300	2.37.0A500
------	------------	------------	------------

### Art. 375

Chiave a pipa  
Box wrench



CH	12	19	22	30
R	200	250	285	480
Cod.	0.09.41160	0.09.42180	0.09.43320	0.09.43360

### Art. 376

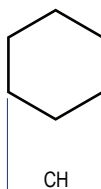
Chiave a T  
T wrench



CH	4	5	6	10
Cod.	0.09.21400	0.09.23600	0.09.25100	

### Art. 377

Chiave esagonale serie lunga  
Hexagon wrench long reach



CH

CH	2	2,5	3	3,5	4	4,5
Cod.	0.09.37702	0.09.37725	0.09.37703	0.09.37735	0.09.37704	0.09.37745

CH	5	6	7	8	9	10
Cod.	0.09.37705	0.09.37706	0.09.37707	0.09.37708	0.09.37709	0.09.37710

CH	12	13	14	17	19	-
Cod.	0.09.37712	0.09.37713	0.09.37714	0.09.37717	0.09.37719	-