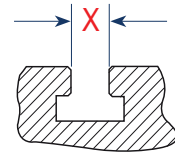
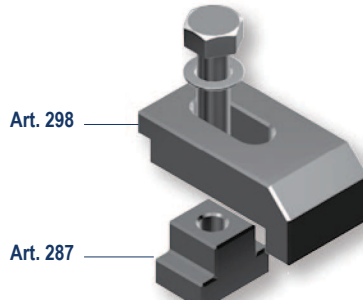
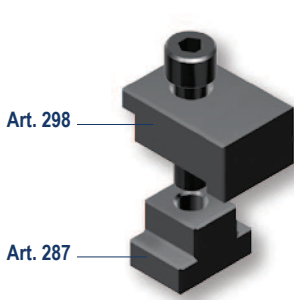


## STAFFE DI ANCORAGGIO PER MORSE / VISE HOLDING CLAMPING

### Art. 296

Coppia di staffe Art. 298 complete di vite e dado a T (Art. 287) / Pair of vise holding clamps Art. 298 complete of screws and T nuts (Art. 287)



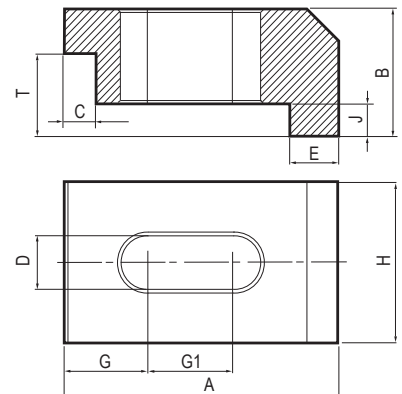
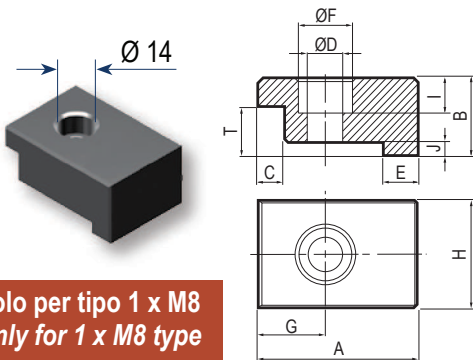
Specificare sempre la cava della vostra macchina

Always specify the machine T-slot dimension

MORSA / VISE	Tipo (grandezza) morse / Vise (type) size							
<b>STD</b>	1 - 2				3 - 4		5 - 6	
<b>FMS</b>	1				2 - 3 - 4		5 - 6	
<b>MULTIFLEX</b>	1				2 - 3		-	
Tipo / Type	1 x M8	1 x M10	1 x M12	1 x M16	2 x M12	2 x M16	3 x M12	3 x M16
Cod.	2.29.61000 / M8	2.29.61000 / M10	2.29.61000 / M12	2.29.61000 / M16	2.29.63000 / M12	2.29.63000 / M16	2.29.65000 / M12	2.29.65000 / M16

### Art. 298

Staffe di ancoraggio per morse (Venduta singolarmente) / Vise holding clamps (Single)



Solo per tipo 1 x M8  
Only for 1 x M8 type

MORSA / VISE	Tipo (grandezza) morse / Vise (type) size							
<b>STD</b>	1 - 2				3 - 4		5 - 6	
<b>FMS</b>	1				2 - 3		4 - 5 - 6	
<b>MULTIFLEX</b>	1				2 - 3		-	
Tipo / Type	1 x M8	1 x M10	1 x M12	1 x M16	2 x M12	2 x M16	3 x M12	3 x M16
A	50	50	50	50	76	76	86	86
B	24	24	24	24	30	30	40	40
C	6	6	6	6	6	6	10	10
ØD	8,5	11	13	17	13	17	13	17
E	10	10	10	10	13	13	15	15
ØF	14	-	-	-	-	-	-	-
G / G1	17	16 / 15	17,5 / 13	19 / 9	17 / 22	16 / 15	26 / 27	26 / 27
H	34	34	34	34	42	42	50	50
I	8	10	10	10	-	-	-	-
J	4	4	4	4	10	10	10	10
T ± 0,1	15	15	15	15	20	20	26	26
Cod.	2.29.81000 / M8	2.29.81000 / M10	2.29.81000 / M12	2.29.81000 / M16	2.29.83000 / M12	2.29.83000 / M16	2.29.85000 / M12	2.29.85000 / M16