

SERVOCOMANDI OLEODINAMICI / HYDRAULIC SERVO UNITS

Tipo (grandezza) morse / Vise (type) size

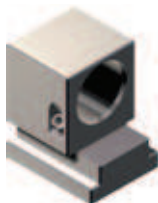
1
2
3
4
5
6
Art. 271

 Supporto di serraggio con cilindro idraulico
 Clamping support with hydraulic cylinder


Cod.	2.27.11000	2.27.12000	2.27.13000	2.27.14000	2.27.15000	2.27.16000
------	------------	------------	------------	------------	------------	------------

Corsa / Stroke

30
40
Art. 283

 Supporto di serraggio per cilindro idraulico
 Clamping support for hydraulic cylinder


Cod.	2.28.31000	2.28.32000	2.28.33000	2.28.34000	2.28.35000	2.28.36000
------	------------	------------	------------	------------	------------	------------

Art. 285

 Cilindro idraulico a semplice effetto.
 Serraggio idraulico e apertura meccanica
 Hydraulic cylinder single acting.
 Hydraulic clamping and mechanical opening


Cod.	2.28.51000	-	2.28.53000	-	2.28.55000	2.28.56000
------	------------	---	------------	---	------------	------------

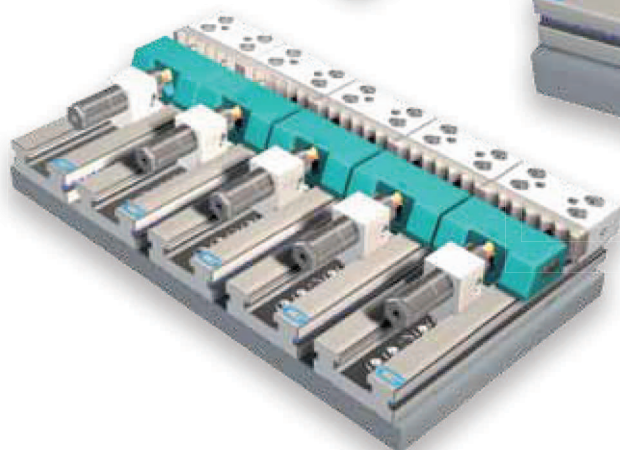
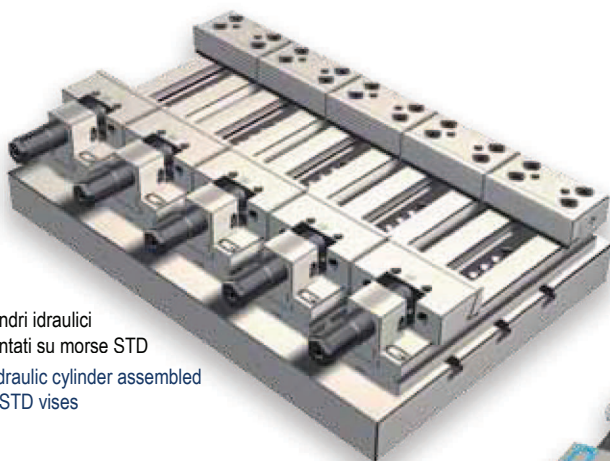
Art. 569

 Cilindro idraulico a doppio effetto.
 Apertura e chiusura idrauliche
 Hydraulic cylinder double acting.
 Hydraulic opening and clamping


Cod.	1.56.91000	-	1.56.93000	-	1.56.95000	1.56.96000
------	------------	---	------------	---	------------	------------

 Specifico per sistemi robotizzati
 Specific for robotic applications

Esempi di applicazione / Typical arrangements

 Cilindri idraulici
 montati su morse STD
 Hydraulic cylinder assembled
 on STD vises

 Cilindri idraulici assemblati con ganasce oleodinamiche **Art. 188** per serraggi
 in serie di particolari tondi in verticale
 Hydraulic cylinders assembled with oleodynamic jaws **Art. 188** for clamping
 of multiple round workpieces in vertical